

## \$549,900 - 601 141 Festival Way, Sherwood Park

MLS® #E4417255

**\$549,900**

2 Bedroom, 2.00 Bathroom, 1,388 sqft

Condo / Townhouse on 0.00 Acres

Centre In The Park, Sherwood Park, AB

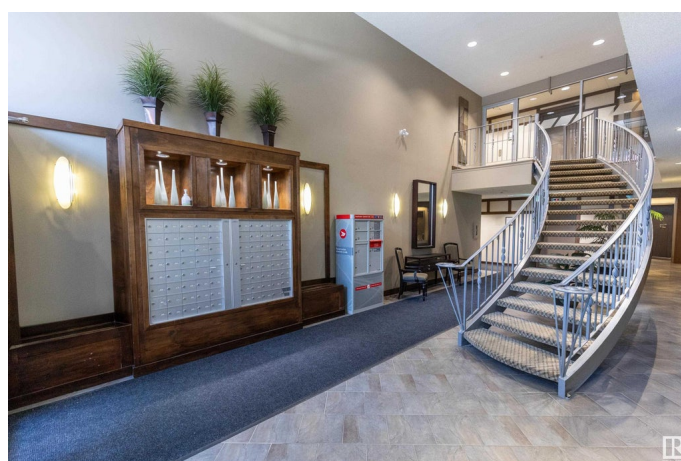
Discover unparalleled luxury in this spectacular penthouse suite located in the prestigious Centre in the Park. This concrete & steel masterpiece features floor-to-ceiling windows that flood the space w/natural light, while offering stunning views. The kitchen is a chef's dream, showcasing dark cabinetry, granite throughout, a sit-up island, & stainless steel appliances. It opens seamlessly to the living room, complete w/a corner gas fireplace & dining area, all set under soaring 14' ceilings. This unit boasts 2 spacious bedrooms w/the primary suite offering a walk-thru to 4 separate closets & a luxurious 5pc ensuite w/a separate shower & tub. From here, step onto the massive 24' deck to take in breathtaking views. Completing the condo is an additional 4pc bathroom, laundry room & high-end finishes throughout. The suite also comes w/2 titled u/g parking stalls & storage cage, ensuring convenience & ample storage. These penthouse units seldom come available - don't wait to make this one yours!

Built in 2007

### Essential Information

MLS® # E4417255

Price \$549,900



Bedrooms	2
Bathrooms	2.00
Full Baths	2
Square Footage	1,388
Acres	0.00
Year Built	2007
Type	Condo / Townhouse
Sub-Type	Lowrise Apartment
Style	Single Level Apartment
Status	Active

### Community Information

Address	601 141 Festival Way
Area	Sherwood Park
Subdivision	Centre In The Park
City	Sherwood Park
County	ALBERTA
Province	AB
Postal Code	T8A 3V8

### Amenities

Amenities	Air Conditioner, Car Wash, Exercise Room, Guest Suite, Parking-Visitor
Parking	Heated, Underground

### Interior

Interior Features	ensuite bathroom
Appliances	Dishwasher-Built-In, Dryer, Microwave Hood Fan, Refrigerator, Stove-Electric, Washer, Window Coverings
Heating	Fan Coil, Heat Pump, Natural Gas
Fireplace	Yes
Fireplaces	Corner
# of Stories	6
Stories	1
Has Basement	Yes
Basement	None, No Basement

### Exterior

Exterior	Concrete, Brick, Stucco
Exterior Features	Public Transportation, Shopping Nearby

Roof	EPDM Membrane
Construction	Concrete, Brick, Stucco
Foundation	Concrete Perimeter

**Additional Information**

Date Listed	January 7th, 2025
Days on Market	171
Zoning	Zone 25
Condo Fee	\$966

DATA IS DEEMED RELIABLE BUT IS NOT GUARANTEED ACCURATE BY THE REALTORS® ASSOCIATION OF EDMONTON. COPYRIGHT 2025 BY THE REALTORS® ASSOCIATION OF EDMONTON. ALL RIGHTS RESERVED.Trademarks are owned or controlled by the Canadian Real Estate Association (CREA) and identify real estate professionals who are members of CREA (REALTOR®, REALTORS®) and/or the quality of services they provide (MLS®, Multiple Listing Service®)

Listing information last updated on June 27th, 2025 at 8:48pm MDT