

\$329,000 - 403 10028 119 Street, Edmonton

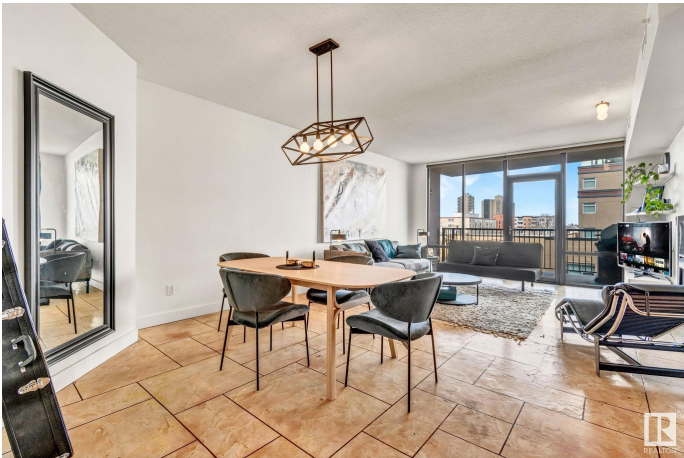
MLS® #E4423124

\$329,000

2 Bedroom, 2.00 Bathroom, 1,061 sqft
Condo / Townhouse on 0.00 Acres

W&hkw&nt&win, Edmonton, AB

Welcome to the Illuminada, one of downtown Edmonton's most sought-after buildings. This 1061 sq ft home radiates a loft-inspired ambiance with its 9ft ceilings and expansive floor-to-ceiling windows. The unit features two bedrooms and two bathrooms, including a primary suite with a stunning 5-piece ensuite and walk-in closet. The custom kitchen boasts a large island, rich dark wood cabinets, and stainless steel appliances. Enjoy modern comforts with the inclusion of air conditioning. With the building's prime location, you can immerse yourself in every aspect of downtown living. Step out and enjoy trendy eateries, chic lounges, quaint coffee spots, art galleries, health food markets, and premium boutiques. The Illuminada also offers fantastic amenities, including a guest room, a vibrant social room, warm underground parking, and a car wash. Don't miss your chance to be the next owner of this amazing unit!



Built in 2004

Essential Information

MLS® #	E4423124
Price	\$329,000
Bedrooms	2
Bathrooms	2.00
Full Baths	2

Square Footage	1,061
Acres	0.00
Year Built	2004
Type	Condo / Townhouse
Sub-Type	Apartment High Rise
Style	Single Level Apartment
Status	Active

Community Information

Address	403 10028 119 Street
Area	Edmonton
Subdivision	WÃ©hkwÃ©ntÃ©win
City	Edmonton
County	ALBERTA
Province	AB
Postal Code	T5K 1Y8

Amenities

Amenities	Air Conditioner, Car Wash, Ceiling 9 ft., Closet Organizers, Guest Suite, No Animal Home, No Smoking Home, Parking-Extra, Party Room, Patio, Recreation Room/Centre, Secured Parking, Storage-In-Suite
Parking	Heated, Underground

Interior

Interior Features	ensuite bathroom
Appliances	Air Conditioning-Central, Dishwasher-Built-In, Dryer, Microwave Hood Fan, Refrigerator, Stove-Electric, Washer, Window Coverings
Heating	Heat Pump, Natural Gas
# of Stories	12
Stories	1
Has Basement	Yes
Basement	None, No Basement

Exterior

Exterior	Concrete, Brick, Composition
Exterior Features	Commercial, Flat Site, Golf Nearby, Park/Reserve, Public Transportation, Shopping Nearby, View City
Roof	EPDM Membrane
Construction	Concrete, Brick, Composition

Foundation Concrete Perimeter

Additional Information

Date Listed February 27th, 2025
Days on Market 70
Zoning Zone 12
Condo Fee \$670

DATA IS DEEMED RELIABLE BUT IS NOT GUARANTEED ACCURATE BY THE REALTORS® ASSOCIATION OF EDMONTON. COPYRIGHT 2025 BY THE REALTORS® ASSOCIATION OF EDMONTON. ALL RIGHTS RESERVED.Trademarks are owned or controlled by the Canadian Real Estate Association (CREA) and identify real estate professionals who are members of CREA (REALTOR®, REALTORS®) and/or the quality of services they provide (MLS®, Multiple Listing Service®)
Listing information last updated on May 8th, 2025 at 2:47pm MDT