

\$299,900 - 2404 4 Augustine Crescent, Sherwood Park

MLS® #E4427744

\$299,900

2 Bedroom, 2.00 Bathroom, 953 sqft

Condo / Townhouse on 0.00 Acres

Aspen Trails, Sherwood Park, AB

Gorgeous TOP (Nine foot ceilings) floor executive apartment with Espresso cabinets and granite countertops! Ensuite laundry and 2 titled parking stalls. Wrap around deck with SW exposure and roughed in for A/C....Beautiful!! Propane BBQ's only. No pet bulding

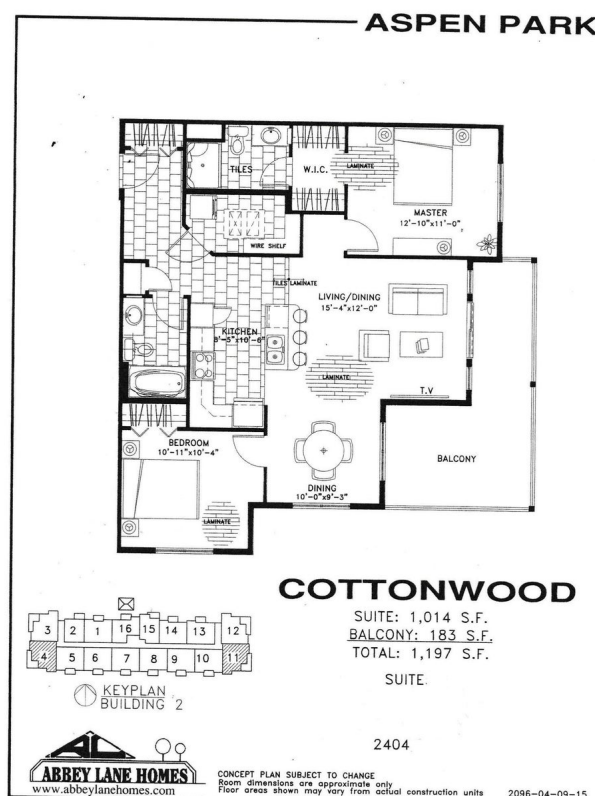
Built in 2015

Essential Information

| | |
|----------------|------------------------|
| MLS® # | E4427744 |
| Price | \$299,900 |
| Bedrooms | 2 |
| Bathrooms | 2.00 |
| Full Baths | 2 |
| Square Footage | 953 |
| Acres | 0.00 |
| Year Built | 2015 |
| Type | Condo / Townhouse |
| Sub-Type | Lowrise Apartment |
| Style | Single Level Apartment |
| Status | Active |

Community Information

| | |
|-------------|---------------------------|
| Address | 2404 4 Augustine Crescent |
| Area | Sherwood Park |
| Subdivision | Aspen Trails |



| | |
|-------------|---------------|
| City | Sherwood Park |
| County | ALBERTA |
| Province | AB |
| Postal Code | T8H 0X8 |

Amenities

| | |
|-----------|--|
| Amenities | Exterior Walls- 2"x6", No Animal Home, Parking-Plug-Ins, Parking-Visitor, Rental Pool Option |
| Parking | 2 Outdoor Stalls |

Interior

| | |
|-------------------|--|
| Interior Features | ensuite bathroom |
| Appliances | Dishwasher-Built-In, Dryer, Refrigerator, Stove-Electric, Washer |
| Heating | Baseboard, Natural Gas |
| # of Stories | 4 |
| Stories | 4 |
| Has Basement | Yes |
| Basement | None, No Basement |

Exterior

| | |
|-------------------|---|
| Exterior | Wood, Asphalt, Stone, Vinyl |
| Exterior Features | Cul-De-Sac, Flat Site, Golf Nearby, Public Swimming Pool, Public Transportation, Schools, Shopping Nearby |
| Roof | Asphalt Shingles |
| Construction | Wood, Asphalt, Stone, Vinyl |
| Foundation | Concrete Perimeter |

Additional Information

| | |
|----------------|------------------|
| Date Listed | March 27th, 2025 |
| Days on Market | 148 |
| Zoning | Zone 25 |
| Condo Fee | \$463 |

DATA IS DEEMED RELIABLE BUT IS NOT GUARANTEED ACCURATE BY THE REALTORS® ASSOCIATION OF EDMONTON. COPYRIGHT 2025 BY THE REALTORS® ASSOCIATION OF EDMONTON. ALL RIGHTS RESERVED. Trademarks are owned or controlled by the Canadian Real Estate Association (CREA) and identify real estate professionals who are members of CREA (REALTOR®, REALTORS®) and/or the quality of services they provide (MLS®, Multiple Listing Service®)

Listing information last updated on August 22nd, 2025 at 6:02am MDT