

\$424,900 - 2019 32 Street, Edmonton

MLS® #E4431087

\$424,900

3 Bedroom, 2.50 Bathroom, 1,270 sqft

Single Family on 0.00 Acres

Laurel, Edmonton, AB

Welcome to this lovely 3-bedroom, 2.5-bath duplex located in the highly desirable community of Laurel. This home is perfect for first-time buyers or families looking to grow, offering a blend of comfort, convenience, + community amenities. Enjoy the playground just around the corner, ideal for kids + family gatherings. Walking distance to a local school, making it easy for children to attend. Close proximity to shopping centres + steps away from public transportation for effortless commuting. The spacious open concept main floor is designed for modern living, featuring large windows at the front + back that flood the rooms with natural light. A private + convenient powder room is located at the back door, providing easy access to the two-tiered deck + double detached garage. The primary bedroom includes a luxurious 4-piece ensuite and a walk-in closet, providing a private retreat. Two additional bedrooms + 4 piece bath complete the upper level. The partially finished basement is ready for your touches.

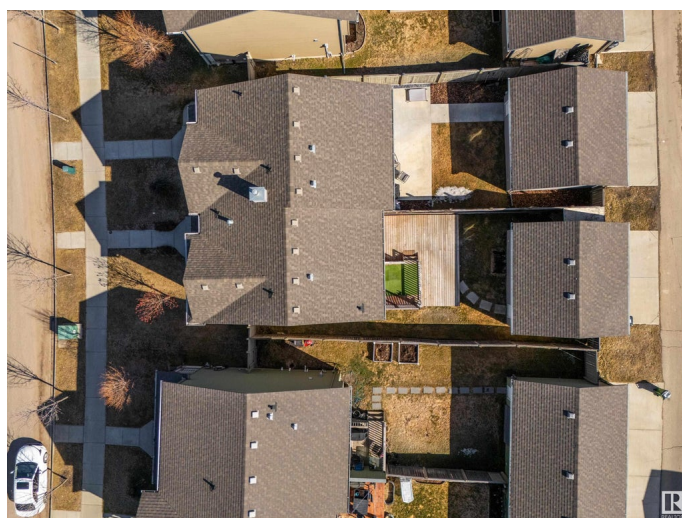
Built in 2010

Essential Information

MLS® # E4431087

Price \$424,900

Bedrooms 3



Bathrooms	2.50
Full Baths	2
Half Baths	1
Square Footage	1,270
Acres	0.00
Year Built	2010
Type	Single Family
Sub-Type	Half Duplex
Style	2 Storey
Status	Active

Community Information

Address	2019 32 Street
Area	Edmonton
Subdivision	Laurel
City	Edmonton
County	ALBERTA
Province	AB
Postal Code	T6T 0K4

Amenities

Amenities	Deck, Detectors Smoke
Parking Spaces	2
Parking	Double Garage Detached

Interior

Interior Features	ensuite bathroom
Appliances	Dishwasher-Built-In, Dryer, Garage Control, Garage Opener, Microwave Hood Fan, Refrigerator, Stove-Electric, Washer, Window Coverings
Heating	Forced Air-1, Natural Gas
Stories	2
Has Basement	Yes
Basement	Full, Partially Finished

Exterior

Exterior	Wood, Vinyl
Exterior Features	Fenced, Flat Site, Golf Nearby, Landscaped, Playground Nearby, Public Transportation, Schools, Shopping Nearby
Roof	Asphalt Shingles

Construction	Wood, Vinyl
Foundation	Concrete Perimeter

School Information

Elementary	Svend Hansen School
Middle	Svend Hansen School
High	Elder Dr. Francis Whiskey

Additional Information

Date Listed	April 16th, 2025
Days on Market	20
Zoning	Zone 30

DATA IS DEEMED RELIABLE BUT IS NOT GUARANTEED ACCURATE BY THE REALTORS® ASSOCIATION OF EDMONTON. COPYRIGHT 2025 BY THE REALTORS® ASSOCIATION OF EDMONTON. ALL RIGHTS RESERVED.Trademarks are owned or controlled by the Canadian Real Estate Association (CREA) and identify real estate professionals who are members of CREA (REALTOR®, REALTORS®) and/or the quality of services they provide (MLS®, Multiple Listing Service®)

Listing information last updated on May 6th, 2025 at 4:47pm MDT