

## \$539,900 - 4113 157a Avenue, Edmonton

MLS® #E4434033

**\$539,900**

4 Bedroom, 3.50 Bathroom, 2,218 sqft

Single Family on 0.00 Acres

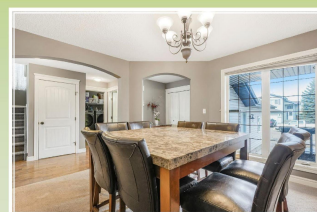
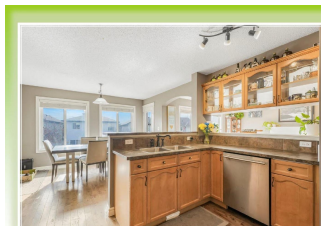
Brintnell, Edmonton, AB

3,178 Sq. Ft. of Finished Living Space in Brintnell â€“ WALKOUT BASEMENT & PRIME LOCATION! This 2 story home features 3+1 bedrooms, 3.5 baths, and is just 1/2 block from the park. Offering a fantastic blend of space, functionality, and convenience. The main floor comprises a large living room with a cozy gas fireplace, and a kitchen filled with cabinetry, corner pantry, and eating barâ€“perfect for entertaining. A formal dining room provides flexibility and can easily function as an office or den. Upstairs, enjoy an oversized bonus room, a primary bedroom with walk-in closet and ensuite bath with corner soaker tub. Two additional bedrooms and full bath complete this level. The walkout basement with its separate entrance, living area, 4th bedroom & full bath - could be perfect for multi-generational living! This expansive home offers plenty of room to grow. Most recent improvements: sump pump (Apr. 2025) + furnace motor & circuit board in 2024.

Built in 2005

### Essential Information

MLS® #	E4434033
Price	\$539,900
Bedrooms	4
Bathrooms	3.50



2 STOREY WALK-OUT IN BRINTNELL



Full Baths	3
Half Baths	1
Square Footage	2,218
Acres	0.00
Year Built	2005
Type	Single Family
Sub-Type	Detached Single Family
Style	2 Storey
Status	Active

### Community Information

Address	4113 157a Avenue
Area	Edmonton
Subdivision	Brintnell
City	Edmonton
County	ALBERTA
Province	AB
Postal Code	T5Y 0A4

### Amenities

Amenities	Deck, Walkout Basement
Parking Spaces	4
Parking	Double Garage Attached

### Interior

Interior Features	ensuite bathroom
Appliances	Dishwasher-Built-In, Garage Oven-Microwave, Refrigerator Attachments, Vacuum System
Heating	Forced Air-1, Natural Gas
Fireplace	Yes
Fireplaces	Mantel
Stories	3
Has Basement	Yes
Basement	Full, Finished

### Exterior

Exterior	Wood, Stone, Vinyl
Exterior Features	Fenced, Landscaped, No Back Lane, Playground Nearby, Public





	Transportation, Schools, Sho
Roof	Asphalt Shingles
Construction	Wood, Stone, Vinyl
Foundation	Concrete Perimeter

### Additional Information

Date Listed	May 2nd, 2025
Days on Market	8
Zoning	Zone 03



DATA IS DEEMED RELIABLE BUT IS NOT GUARANTEED ACCURATE BY THE REALTORS® ASSOCIATION OF EDMONTON. COPYRIGHT 2025 BY THE REALTORS® ASSOCIATION OF EDMONTON. ALL RIGHTS RESERVED. Trademarks are owned or controlled by the Canadian Real Estate Association (CREA) and identify real estate professionals who are members of CREA (REALTOR®, REALTORS®) and/or the quality of services they provide (MLS®, Multiple Listing Service®)

Listing information last updated on May 10th, 2025 at 4:17pm MDT