

## \$369,998 - 19 29 Airport Road, Edmonton

MLS® #E4434268

**\$369,998**

2 Bedroom, 2.50 Bathroom, 1,098 sqft  
Condo / Townhouse on 0.00 Acres

Blatchford Area, Edmonton, AB

Welcome to this brand new townhouse unit the "Abbey" Built by StreetSide Developments and is located in one of Edmonton's newest premier communities of Blatchford. With 1098 square Feet, it comes with front yard landscaping and a single over sized attached garage, this opportunity is perfect for a young family or young couple. Your main floor is complete with upgrade luxury Vinyl Plank flooring throughout the great room and the kitchen. The main entrance/main floor has a good sized Den that can be also used as a bedroom, it also had a 2 piece bathroom. Highlighted in your new kitchen are upgraded cabinets, upgraded counter tops and a tile back splash. The upper level has 2 bedrooms and 2 full bathrooms. Central living. Sustainable living. Urban living. Community living this is what you will find in Blatchford! This home is now move in ready!

Built in 2024

### Essential Information

MLS® #	E4434268
Price	\$369,998
Bedrooms	2
Bathrooms	2.50
Full Baths	2
Half Baths	1



Square Footage	1,098
Acres	0.00
Year Built	2024
Type	Condo / Townhouse
Sub-Type	Townhouse
Style	3 Storey
Status	Active

### **Community Information**

Address	19 29 Airport Road
Area	Edmonton
Subdivision	Blatchford Area
City	Edmonton
County	ALBERTA
Province	AB
Postal Code	T5G 2P9

### **Amenities**

Amenities	See Remarks
Parking Spaces	2
Parking	Single Garage Attached

### **Interior**

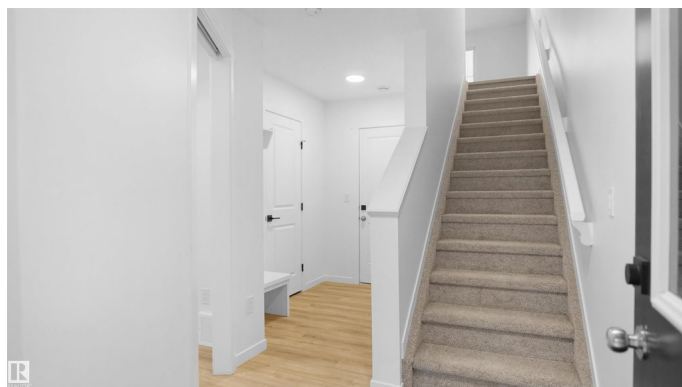
Interior Features	ensuite bathroom
Appliances	Garage Control, Garage Opener
Heating	Heat Pump, Geo Thermal
Stories	3
Has Basement	Yes
Basement	None, No Basement

### **Exterior**

Exterior	Wood, Brick, Stone, Hardie Board Siding
Exterior Features	Fenced, Landscaped, Park/Reserve, Playground Nearby, Public Swimming Pool, Public Transportation, Schools, Shopping Nearby, View Downtown
Roof	Asphalt Shingles
Construction	Wood, Brick, Stone, Hardie Board Siding
Foundation	Concrete Perimeter

### **Additional Information**

Date Listed May 1st, 2025  
Days on Market 162  
Zoning Zone 08  
Condo Fee \$282



DATA IS DEEMED RELIABLE BUT IS NOT GUARANTEED ACCURATE BY THE REALTORS® ASSOCIATION OF EDMONTON. COPYRIGHT 2025 BY THE REALTORS® ASSOCIATION OF EDMONTON. ALL RIGHTS RESERVED. Trademarks are owned or controlled by the Canadian Real Estate Association (CREA) and identify real estate professionals who are members of CREA (REALTOR®, REALTORS®) and/or the quality of services they provide (MLS®, Multiple Listing Service®)

Listing information last updated on October 10th, 2025 at 10:33am MDT