

\$624,900 - 650 Eagleson Crescent, Edmonton

MLS® #E4434874

\$624,900

3 Bedroom, 2.50 Bathroom, 1,735 sqft

Single Family on 0.00 Acres

Edgemont (Edmonton), Edmonton, AB

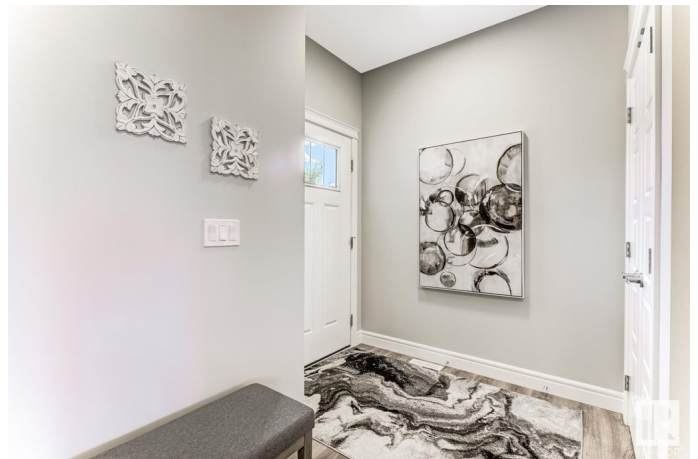
WALKOUT BASEMENT onto a POND! This 1,734 Sq Ft 2 Story home is in mint condition! There are so many great features including; an extra long driveway, a completed double car garage that is heated. There is Air-Conditioning, a large Rec-Room in the walkout basement, & the Primary Bedroom is huge measuring 12'2" x 16'9". Upon entering, the foyer is so welcoming, & when entering from the garage there is a spacious mudroom that leads into the walk-through pantry. The tall upgraded cabinets are a bright two-tone kitchen with white uppers & modern grey lower cabinets, there's QUARTZ counters throughout, & very beautiful stainless steel appliances. The open concept offers a bright and inviting atmosphere. Upstairs there is a cozy bonus room, a walk-in laundry & two well sized spare rooms. The location is great! There are trails around the ravine that offer a peaceful walk, run or bike. The view from the upper deck is beautiful, and the lower walkout patio grants easy access to the spacious developed backyard.

Built in 2021

Essential Information

MLS® # E4434874

Price \$624,900



Bedrooms	3
Bathrooms	2.50
Full Baths	2
Half Baths	1
Square Footage	1,735
Acres	0.00
Year Built	2021
Type	Single Family
Sub-Type	Detached Single Family
Style	2 Storey
Status	Active

Community Information

Address	650 Eagleson Crescent
Area	Edmonton
Subdivision	Edgemont (Edmonton)
City	Edmonton
County	ALBERTA
Province	AB
Postal Code	T6M 0Y4

Amenities

Amenities	Air Conditioner, Ceiling 9 ft., Closet Organizers, Deck, Detectors Smoke, Exterior Walls- 2"x6", No Animal Home, Patio, Vinyl Windows, Walkout Basement
Parking	Double Garage Attached
Is Waterfront	Yes

Interior

Interior Features	ensuite bathroom
Appliances	Dishwasher-Built-In, Dryer, Garage Control, Garage Opener, Microwave Hood Fan, Refrigerator, Stove-Electric, Washer, TV Wall Mount, Garage Heater
Heating	Forced Air-1, Natural Gas
Stories	3
Has Basement	Yes
Basement	Full, Partially Finished

Exterior

Exterior	Wood, Stone, Vinyl
Exterior Features	Backs Onto Lake, Golf Nearby, Landscaped, Public Transportation, Ravine View
Lot Description	33'8" x 130'2"
Roof	Asphalt Shingles
Construction	Wood, Stone, Vinyl
Foundation	Concrete Perimeter

Additional Information

Date Listed May 7th, 2025

Days on Market 1

Zoning Zone 57

DATA IS DEEMED RELIABLE BUT IS NOT GUARANTEED ACCURATE BY THE REALTORS® ASSOCIATION OF EDMONTON. COPYRIGHT 2025 BY THE REALTORS® ASSOCIATION OF EDMONTON. ALL RIGHTS RESERVED. Trademarks are owned or controlled by the Canadian Real Estate Association (CREA) and identify real estate professionals who are members of CREA (REALTOR®, REALTORS®) and/or the quality of services they provide (MLS®, Multiple Listing Service®)

Listing information last updated on May 8th, 2025 at 5:32pm MDT