

\$559,900 - 6211 85 Avenue, Edmonton

MLS® #E4434877

\$559,900

3 Bedroom, 2.00 Bathroom, 1,203 sqft

Single Family on 0.00 Acres

Kenilworth, Edmonton, AB

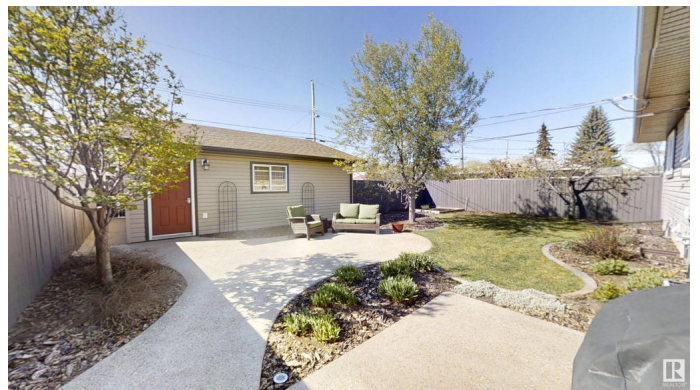
Welcome to this beautifully upgraded bungalow in Kenilworth, featuring 3 bedrooms +den and a fully finished basement, perfect for comfortable family living. The main floor boasts upgraded windows and flooring, a modern kitchen with newer cabinets and quartz countertops, and a renovated bathroom, all designed for contemporary style and functionality. Downstairs, you'll find a den, a stylish 3-piece bath, a spacious rec room, and recent upgrades including a new furnace and hot water tank. The exterior is equally impressive with newer shingles, updated siding, aggregate sidewalks, and meticulously manicured landscaping (with sprinklers for the lawn and flower beds) that enhances curb appeal. For outdoor enthusiasts, the property includes 26 x 24 Garage, RV parking and a hot tub panel and pad already in place, making it easy to add your own hot tub. Thoughtfully improved throughout, this home combines modern updates with practical features in a desirable Kenilworth location-ready for you to settle in.

Built in 1962

Essential Information

MLS® # E4434877

Price \$559,900



Bedrooms	3
Bathrooms	2.00
Full Baths	2
Square Footage	1,203
Acres	0.00
Year Built	1962
Type	Single Family
Sub-Type	Detached Single Family
Style	Bungalow
Status	Active

Community Information

Address	6211 85 Avenue
Area	Edmonton
Subdivision	Kenilworth
City	Edmonton
County	ALBERTA
Province	AB
Postal Code	T6B 0J4

Amenities

Amenities	Air Conditioner
Parking Spaces	4
Parking	Double Garage Detached, RV Parking

Interior

Appliances	Air Conditioning-Central, Dishwasher-Built-In, Dryer, Freezer, Garage Control, Garage Opener, Microwave Hood Fan, Stove-Electric, Washer, Window Coverings, Refrigerators-Two
Heating	Forced Air-1, Natural Gas
Stories	2
Has Basement	Yes
Basement	Full, Finished

Exterior

Exterior	Wood, Vinyl
Exterior Features	Fenced, Fruit Trees/Shrubs, Landscaped, Playground Nearby, Schools
Roof	Asphalt Shingles
Construction	Wood, Vinyl

Foundation Concrete Perimeter

School Information

Elementary Kenlwrth/Waverly/StBrendan
Middle Braemar/StBrendan
High Braemar/AustinOâ€™™Brien

Additional Information

Date Listed May 7th, 2025
Days on Market 1
Zoning Zone 18

DATA IS DEEMED RELIABLE BUT IS NOT GUARANTEED ACCURATE BY THE REALTORS® ASSOCIATION OF EDMONTON. COPYRIGHT 2025 BY THE REALTORS® ASSOCIATION OF EDMONTON. ALL RIGHTS RESERVED.Trademarks are owned or controlled by the Canadian Real Estate Association (CREA) and identify real estate professionals who are members of CREA (REALTOR®, REALTORS®) and/or the quality of services they provide (MLS®, Multiple Listing Service®)
Listing information last updated on May 8th, 2025 at 5:17pm MDT