

\$539,900 - 18519 82 Avenue, Edmonton

MLS® #E4434889

\$539,900

4 Bedroom, 3.00 Bathroom, 1,559 sqft

Single Family on 0.00 Acres

Aldergrove, Edmonton, AB

Situated on a beautiful lot BACKING ONTO A SERENE GREEN SPACE, this charming BUNGALOW features an open-concept floor plan designed for both comfort and functionality. The spacious kitchen flows seamlessly into a well-proportioned family room, creating an inviting space for everyday living and entertaining. The main floor also offers a generous formal dining room and living area, along with 3 well appointed bedrooms. The primary suite includes a large 3pce ensuite and all 4 bedroom closets are outfitted with custom California Closets inserts. The fully finished basement adds valuable living space, featuring a 4th bedroom, a 3pce bath, generous laundry & ample storage. Outdoors, the private backyard is beautifully landscaped w/ mature perennial gardens & features a large covered patio-perfect for relaxing or entertaining. A garden shed provides extra storage, while a covered walkway leads conveniently to the double attached garage (19'5" x 21'9").

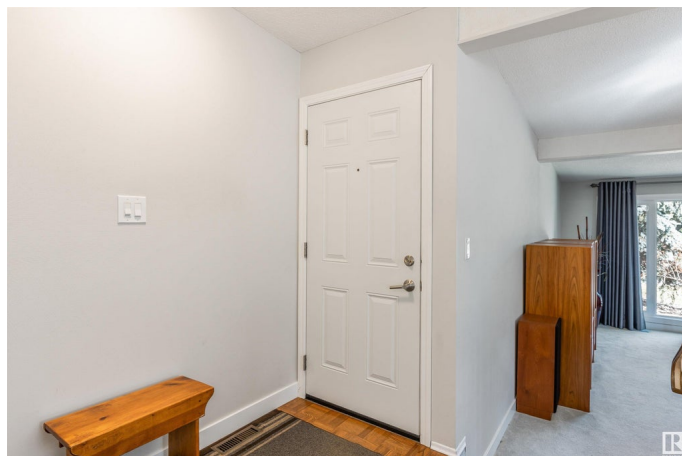
Built in 1975

Essential Information

MLS® # E4434889

Price \$539,900

Bedrooms 4



Bathrooms	3.00
Full Baths	3
Square Footage	1,559
Acres	0.00
Year Built	1975
Type	Single Family
Sub-Type	Detached Single Family
Style	Bungalow
Status	Active

Community Information

Address	18519 82 Avenue
Area	Edmonton
Subdivision	Aldergrove
City	Edmonton
County	ALBERTA
Province	AB
Postal Code	T5T 1G2

Amenities

Amenities	No Animal Home, See Remarks
Parking	Double Garage Attached

Interior

Interior Features	ensuite bathroom
Appliances	Air Conditioning-Central, Dishwasher-Built-In, Dryer, Garage Control, Garage Opener, Garburator, Refrigerator, Stove-Electric, Vacuum System Attachments, Vacuum Systems, Washer
Heating	Forced Air-1, Natural Gas
Fireplace	Yes
Fireplaces	Stone Facing
Stories	2
Has Basement	Yes
Basement	Full, Finished

Exterior

Exterior	Wood, Metal, Stucco
Exterior Features	Fenced, Landscaped, Park/Reserve, See Remarks
Roof	Asphalt Shingles

Construction	Wood, Metal, Stucco
Foundation	Concrete Perimeter

Additional Information

Date Listed	May 7th, 2025
Days on Market	1
Zoning	Zone 20

DATA IS DEEMED RELIABLE BUT IS NOT GUARANTEED ACCURATE BY THE REALTORS® ASSOCIATION OF EDMONTON. COPYRIGHT 2025 BY THE REALTORS® ASSOCIATION OF EDMONTON. ALL RIGHTS RESERVED.Trademarks are owned or controlled by the Canadian Real Estate Association (CREA) and identify real estate professionals who are members of CREA (REALTOR®, REALTORS®) and/or the quality of services they provide (MLS®, Multiple Listing Service®)

Listing information last updated on May 8th, 2025 at 3:47pm MDT