

\$464,900 - 621 Village Drive, Sherwood Park

MLS® #E4435274

\$464,900

5 Bedroom, 2.50 Bathroom, 1,359 sqft

Single Family on 0.00 Acres

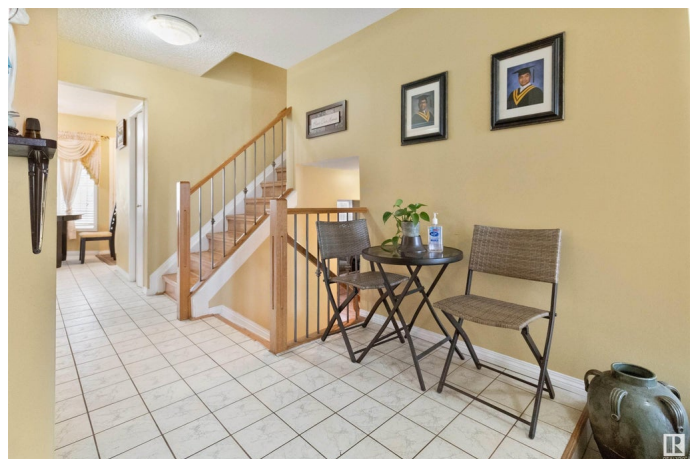
Village on the Lake, Sherwood Park, AB

Located in desirable Village on the Lake, this 1450+ sq ft 4 level split is just waiting for new owners to put their personal mark on. The main floor is spacious and consists of a large living room, dining room and kitchen which leads to backyard. The upper level has a huge master suite with a 4 pce ensuite, and a walk in closet. Two more large bedrooms and a 4 pce bath complete the upper floor. The lower level has a large family room, a 4th bedroom and 2 pce bathroom. The basement is finished with a wet bar, and a laundry area. Furnace was replaced approximately 10 years ago.

Built in 1981

Essential Information

MLS® #	E4435274
Price	\$464,900
Bedrooms	5
Bathrooms	2.50
Full Baths	2
Half Baths	1
Square Footage	1,359
Acres	0.00
Year Built	1981
Type	Single Family
Sub-Type	Detached Single Family
Style	4 Level Split



Status Active

Community Information

Address 621 Village Drive
Area Sherwood Park
Subdivision Village on the Lake
City Sherwood Park
County ALBERTA
Province AB
Postal Code T8A 4K7

Amenities

Amenities See Remarks
Parking Double Garage Attached

Interior

Interior Features ensuite bathroom
Appliances Dishwasher-Built-In, Dryer, Refrigerator, Stove-Electric, Vacuum
 Systems, Washer
Heating Forced Air-2, Natural Gas
Stories 4
Has Basement Yes
Basement Full, Finished

Exterior

Exterior Wood, Brick, Vinyl
Exterior Features Fenced, Landscaped, Public Transportation, Schools, See Remarks
Roof Asphalt Shingles
Construction Wood, Brick, Vinyl
Foundation Concrete Perimeter

Additional Information

Date Listed May 8th, 2025
Days on Market 4
Zoning Zone 25

DATA IS DEEMED RELIABLE BUT IS NOT GUARANTEED ACCURATE BY THE REALTORS® ASSOCIATION OF EDMONTON. COPYRIGHT 2025 BY THE REALTORS® ASSOCIATION OF EDMONTON. ALL RIGHTS RESERVED.Trademarks are owned or controlled by the Canadian Real Estate Association (CREA) and identify real estate professionals who are members of CREA (REALTOR®, REALTORS®) and/or the quality of services they provide (MLS®, Multiple Listing Service®)
Listing information last updated on May 11th, 2025 at 9:31pm MDT