

\$647,500 - 15939 88 Street, Edmonton

MLS® #E4435331

\$647,500

5 Bedroom, 3.00 Bathroom, 1,900 sqft
Single Family on 0.00 Acres

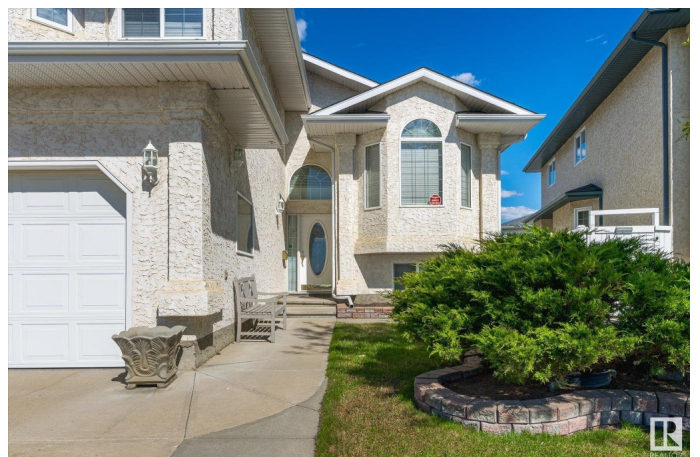
Belle Rive, Edmonton, AB

Nestled in the desirable and tranquil community of Belle Rive, Edmonton, this charming bi-level single-family detached home offers an exceptional blend of, functional design, and family-friendly amenities. With its spacious layout, expansive windows, and meticulously landscaped yard, this property provides both comfort and elegance for the discerning homeowner. This 4 bedroom home with 3 bathrooms offers a classic floor plan with, living room, family room, dining room and eating kitchen. The private primary bedroom on the upper level with a four piece ensuite. The basement is fully finished with a second family room, 3 piece guest bathroom and guest room. As well as storage room and laundry room. A spacious double-car attached garage with a overhead door provides ample storage and parking space. The wide, double-wide concrete driveway can easily accommodate additional vehicles.

Built in 1998

Essential Information

MLS® #	E4435331
Price	\$647,500
Bedrooms	5
Bathrooms	3.00
Full Baths	3



Square Footage	1,900
Acres	0.00
Year Built	1998
Type	Single Family
Sub-Type	Detached Single Family
Style	Bi-Level
Status	Active

Community Information

Address	15939 88 Street
Area	Edmonton
Subdivision	Belle Rive
City	Edmonton
County	ALBERTA
Province	AB
Postal Code	T5Z 3B7

Amenities

Amenities	Off Street Parking, On Street Parking, Ceiling 9 ft., Deck, No Animal Home, No Smoking Home, Television Connection, Vacuum System-Roughed-In
Parking Spaces	4
Parking	Double Garage Attached, Heated, Insulated

Interior

Interior Features	ensuite bathroom
Appliances	Dishwasher-Built-In, Dryer, Garage Control, Garage Opener, Hood Fan, Oven-Microwave, Stove-Electric, Vacuum System Attachments, Vacuum Systems, Window Coverings, Refrigerators-Two
Heating	Forced Air-1, Natural Gas
Stories	2
Has Basement	Yes
Basement	Full, Finished

Exterior

Exterior	Wood, Stucco
Exterior Features	Fenced, Flat Site, Landscaped, Playground Nearby, Public Transportation
Roof	Asphalt Shingles
Construction	Wood, Stucco

Foundation Concrete Perimeter

Additional Information

Date Listed May 8th, 2025

Days on Market 2

Zoning Zone 28

DATA IS DEEMED RELIABLE BUT IS NOT GUARANTEED ACCURATE BY THE REALTORS® ASSOCIATION OF EDMONTON. COPYRIGHT 2025 BY THE REALTORS® ASSOCIATION OF EDMONTON. ALL RIGHTS RESERVED.Trademarks are owned or controlled by the Canadian Real Estate Association (CREA) and identify real estate professionals who are members of CREA (REALTOR®, REALTORS®) and/or the quality of services they provide (MLS®, Multiple Listing Service®)

Listing information last updated on May 10th, 2025 at 1:02pm MDT