

## \$998,800 - 1429 Herring-cooper Way, Edmonton

MLS® #E4435435

**\$998,800**

5 Bedroom, 3.50 Bathroom, 3,257 sqft

Single Family on 0.00 Acres

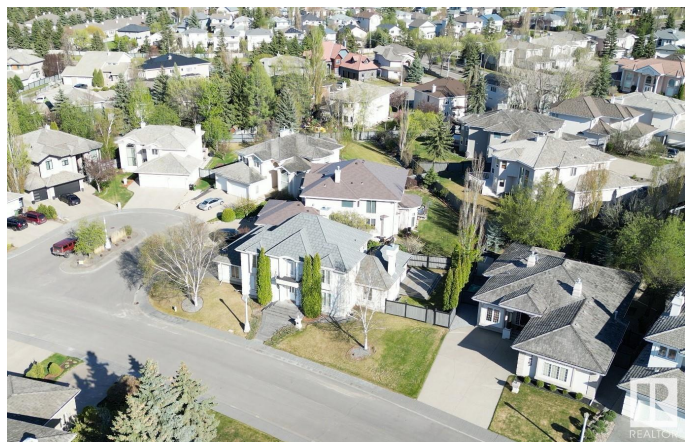
Henderson Estates, Edmonton, AB

This exquisite 4 bedroom, former Gable Showhome boasts stunning French Provincial decor, offering a perfect blend of elegance & comfort. The exquisite spiral staircase exudes architectural style when you enter the foyer. A formal living room & dining room, plus office, & family room make this a desirable traditional layout, rarely found in some of today's homes. The spacious kitchen & family room with fireplace make the heart of the home warm & welcoming. Plus a main floor bonus room off the kitchen offers lots of options to function as whatever your heart desires. The upper floor has 4 large bedrooms, plus a beautiful library with front facing balcony. A fully finished basement adds lots of space for extra enjoyment, games, plus a huge storage room. Notable features: Metal tile roof, Central AC, Newer Hi-Eff furnace & Air Exchanger, Newer HW tank, Central Vac, Speaker system. Fridge & Dishwasher newer.

Built in 1996

### Essential Information

MLS® #	E4435435
Price	\$998,800
Bedrooms	5
Bathrooms	3.50
Full Baths	3



Half Baths	1
Square Footage	3,257
Acres	0.00
Year Built	1996
Type	Single Family
Sub-Type	Detached Single Family
Style	2 Storey
Status	Active

### Community Information

Address	1429 Herring-cooper Way
Area	Edmonton
Subdivision	Henderson Estates
City	Edmonton
County	ALBERTA
Province	AB
Postal Code	T6R 2L9

### Amenities

Amenities	Air Conditioner, Deck, Hot Tub
Parking Spaces	6
Parking	Insulated, Triple Garage Attached

### Interior

Interior Features	ensuite bathroom
Appliances	Air Conditioning-Central, Dishwasher-Built-In, Dryer, Garage Control, Garage Opener, Garburator, Hood Fan, Refrigerator, Storage Shed, Stove-Gas, Vacuum System Attachments, Vacuum Systems, Washer, Window Coverings, Hot Tub
Heating	Forced Air-1, In Floor Heat System, Natural Gas
Fireplace	Yes
Fireplaces	Glass Door, Mantel, Masonry
Stories	3
Has Basement	Yes
Basement	Full, Finished

### Exterior

Exterior	Wood, Stucco
Exterior Features	Fenced, Landscaped, No Back Lane, Playground Nearby, Schools,

Shopping Nearby, See Remarks

Roof	Metal
Construction	Wood, Stucco
Foundation	Concrete Perimeter

### School Information

Elementary	Earl Buxton, St. Mary's
Middle	Brander Gardens
High	Lillian Osborne

### Additional Information

Date Listed	May 9th, 2025
Days on Market	1
Zoning	Zone 14
HOA Fees	250
HOA Fees Freq.	Annually

DATA IS DEEMED RELIABLE BUT IS NOT GUARANTEED ACCURATE BY THE REALTORS® ASSOCIATION OF EDMONTON. COPYRIGHT 2025 BY THE REALTORS® ASSOCIATION OF EDMONTON. ALL RIGHTS RESERVED. Trademarks are owned or controlled by the Canadian Real Estate Association (CREA) and identify real estate professionals who are members of CREA (REALTOR®, REALTORS®) and/or the quality of services they provide (MLS®, Multiple Listing Service®)

Listing information last updated on May 10th, 2025 at 5:32pm MDT