

\$627,500 - 5 Waterford Place, St. Albert

MLS® #E4435622

\$627,500

4 Bedroom, 3.50 Bathroom, 2,008 sqft

Single Family on 0.00 Acres

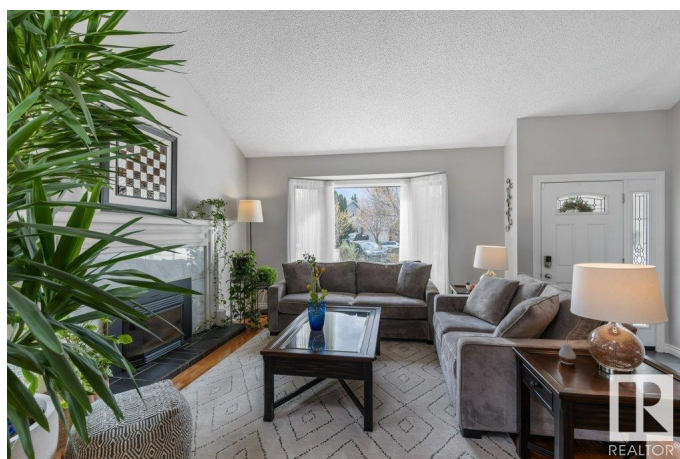
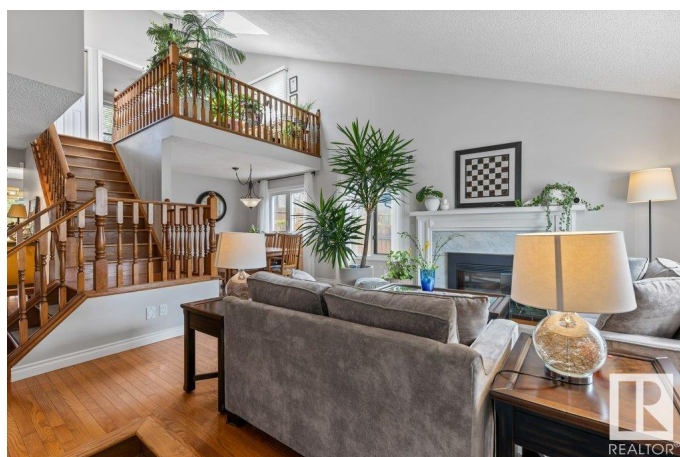
Woodlands (St. Albert), St. Albert, AB

Pride of ownership abounds in this beautifully updated and bright 2-storey home tucked into a quiet cul-de-sac in Woodlands. Featuring an open-concept main floor with hardwood throughout, spacious living and dining rooms, and a cozy gas fireplace. The white kitchen boasts with quartz counters, stainless steel appliances, ample cabinetry, and a sunny breakfast nook. An inviting family room with a second gas fireplace and walkout to a large 3 season sunroom. Main floor laundry offers additional storage. Upstairs includes a versatile loft open to below and 3 bedrooms, including a generous primary with 3-piece ensuite. The fully finished basement adds extra living space with a rec room, 4th bedroom, full 4-piece bath with in-floor heating, and ample storage. Enjoy outdoor living with a deck off the sunroom and a beautifully landscaped large pie shaped backyard with irrigation and mature trees. Truly a 10+ home!

Built in 1980

Essential Information

MLS® #	E4435622
Price	\$627,500
Bedrooms	4
Bathrooms	3.50
Full Baths	3



Half Baths	1
Square Footage	2,008
Acres	0.00
Year Built	1980
Type	Single Family
Sub-Type	Detached Single Family
Style	2 Storey
Status	Active

Community Information

Address	5 Waterford Place
Area	St. Albert
Subdivision	Woodlands (St. Albert)
City	St. Albert
County	ALBERTA
Province	AB
Postal Code	T8N 3P9

Amenities

Amenities	Deck, Sunroom
Parking	Double Garage Attached

Interior

Interior Features	ensuite bathroom
Appliances	Dishwasher-Built-In, Dryer, Garage Control, Garage Opener, Microwave Hood Fan, Refrigerator, Storage Shed, Stove-Electric, Washer, TV Wall Mount
Heating	Forced Air-1, Natural Gas
Fireplace	Yes
Fireplaces	Stone Facing
Stories	3
Has Basement	Yes
Basement	Full, Finished

Exterior

Exterior	Wood, Metal
Exterior Features	Cul-De-Sac, Fenced, Landscaped, Public Transportation, Schools
Roof	Asphalt Shingles
Construction	Wood, Metal

Foundation Concrete Perimeter

Additional Information

Date Listed May 9th, 2025

Days on Market 1

Zoning Zone 24

DATA IS DEEMED RELIABLE BUT IS NOT GUARANTEED ACCURATE BY THE REALTORS® ASSOCIATION OF EDMONTON. COPYRIGHT 2025 BY THE REALTORS® ASSOCIATION OF EDMONTON. ALL RIGHTS RESERVED.Trademarks are owned or controlled by the Canadian Real Estate Association (CREA) and identify real estate professionals who are members of CREA (REALTOR®, REALTORS®) and/or the quality of services they provide (MLS®, Multiple Listing Service®)

Listing information last updated on May 10th, 2025 at 5:02pm MDT