

\$419,000 - 2415 133 Avenue, Edmonton

MLS® #E4435643

\$419,000

3 Bedroom, 2.50 Bathroom, 1,673 sqft

Single Family on 0.00 Acres

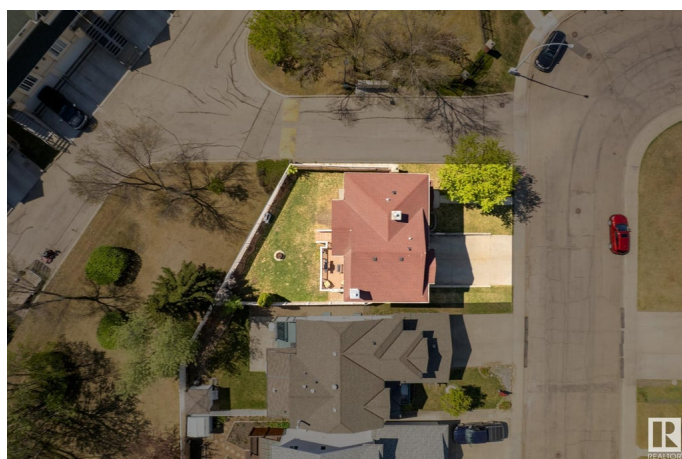
Kernohan, Edmonton, AB

Welcome to this charming home located in the desirable Kernohan community. Featuring 3 spacious bedrooms and 3 bathrooms. This home offers plenty of storage space throughout. The bright and open living room includes a cozy gas fireplace, while the open kitchen provides ample cupboard and counter space. Perfect for everyday living and entertaining. Enjoy year round comfort with central air conditioning (2018) and an updated furnace (2018). The fully fenced and landscaped yard adds plenty of space for outdoor enjoyment. Situated just minutes from Hermitage Park with off leash dog areas and scenic trails, and only minutes to shopping, the Claireview LRT, recreation facilities, Yellowhead Trail, and Anthony Henday. Quick possession is available. Ready to move in and make this your home.

Built in 1993

Essential Information

MLS® #	E4435643
Price	\$419,000
Bedrooms	3
Bathrooms	2.50
Full Baths	2
Half Baths	1
Square Footage	1,673



Acres	0.00
Year Built	1993
Type	Single Family
Sub-Type	Detached Single Family
Style	2 Storey
Status	Active

Community Information

Address	2415 133 Avenue
Area	Edmonton
Subdivision	Kernohan
City	Edmonton
County	ALBERTA
Province	AB
Postal Code	T5A 4Z9

Amenities

Amenities	Air Conditioner, Deck, Detectors Smoke, Front Porch
Parking	Double Garage Attached

Interior

Interior Features	ensuite bathroom
Appliances	Air Conditioning-Central, Dishwasher-Built-In, Dryer, Garage Control, Garage Opener, Microwave Hood Fan, Refrigerator, Stove-Electric, Washer, Window Coverings
Heating	Forced Air-1, Natural Gas
Fireplace	Yes
Fireplaces	Corner
Stories	2
Has Basement	Yes
Basement	Partial, See Remarks

Exterior

Exterior	Wood, Vinyl
Exterior Features	Fenced, Landscaped, Playground Nearby, Shopping Nearby
Roof	Asphalt Shingles
Construction	Wood, Vinyl
Foundation	Concrete Perimeter

Additional Information

Date Listed May 9th, 2025

Days on Market 1

Zoning Zone 35

DATA IS DEEMED RELIABLE BUT IS NOT GUARANTEED ACCURATE BY THE REALTORS® ASSOCIATION OF EDMONTON. COPYRIGHT 2025 BY THE REALTORS® ASSOCIATION OF EDMONTON. ALL RIGHTS RESERVED. Trademarks are owned or controlled by the Canadian Real Estate Association (CREA) and identify real estate professionals who are members of CREA (REALTOR®, REALTORS®) and/or the quality of services they provide (MLS®, Multiple Listing Service®)

Listing information last updated on May 10th, 2025 at 6:47pm MDT