

\$449,000 - 10173 93 Street, Edmonton

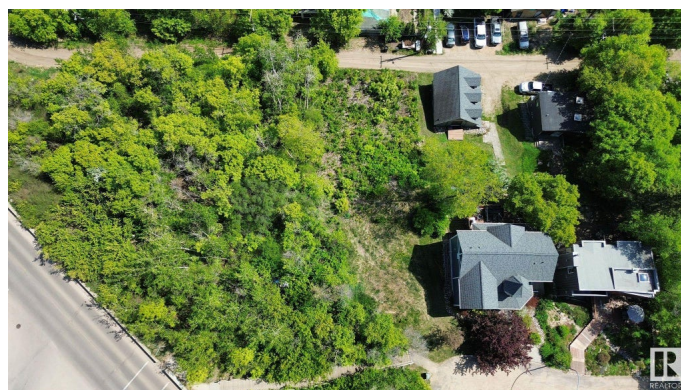
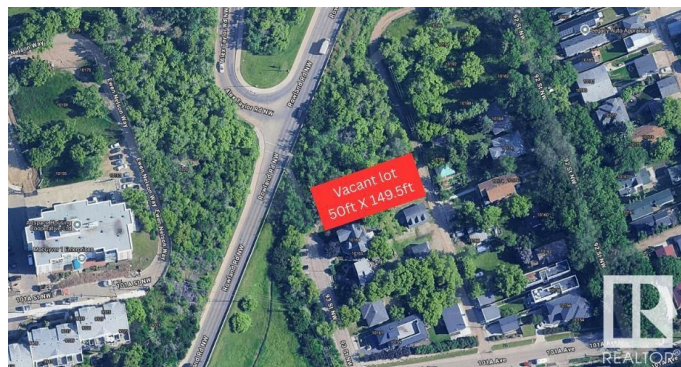
MLS® #E4437516

\$449,000

0 Bedroom, 0.00 Bathroom,
Single Family on 0.00 Acres

Riverdale, Edmonton, AB

LOCATION, LOCATION, LOCATION! RARE OPPORTUNITY! A rare chance to own a 50X150 FT WALK-OUT LOT in one of the most DESIRABLE LOCATIONS in RIVERDALE – a community celebrated for its character and unbeatable access to local conveniences. With approximately 7500 SQ FT of space, this WALKOUT LOT presents NUMEROUS DEVELOPMENT OPPORTUNITIES. Build your dream project in a TOP-TIER LOCATION just moments from SCHOOLS, the SCENIC RIVER VALLEY TRAILS, DAWSON PARK, DOWNTOWN, GOLF COURSES, SHOPPING, TRANSIT OPTIONS, and PLAYGROUNDS. Development must comply with the MATURE NEIGHBOURHOOD OVERLAY, RF2 ZONING (LOW DENSITY INFILL), and the RIVERDALE AREA REDEVELOPMENT PLAN (ARP).



Essential Information

MLS® #	E4437516
Price	\$449,000
Bathrooms	0.00
Acres	0.00
Type	Single Family
Sub-Type	Vacant Lot/Land
Status	Active

Community Information

Address	10173 93 Street
Area	Edmonton
Subdivision	Riverdale
City	Edmonton
County	ALBERTA
Province	AB
Postal Code	T5H 1W8

Exterior

Exterior Features	No Through Road, Park/Reserve, Picnic Area, Playground Nearby, Public Transportation, Ravine View, River Valley View, River View, Schools, Shopping Nearby, Sloping Lot, View City, View Downtown, See Remarks
-------------------	--

Additional Information

Date Listed	May 21st, 2025
Days on Market	32
Zoning	Zone 13

DATA IS DEEMED RELIABLE BUT IS NOT GUARANTEED ACCURATE BY THE REALTORS® ASSOCIATION OF EDMONTON. COPYRIGHT 2025 BY THE REALTORS® ASSOCIATION OF EDMONTON. ALL RIGHTS RESERVED.Trademarks are owned or controlled by the Canadian Real Estate Association (CREA) and identify real estate professionals who are members of CREA (REALTOR®, REALTORS®) and/or the quality of services they provide (MLS®, Multiple Listing Service®)

Listing information last updated on June 22nd, 2025 at 7:47am MDT