

\$439,900 - 5181 Crabapple Link Link, Edmonton

MLS® #E4439606

\$439,900

3 Bedroom, 2.50 Bathroom, 1,407 sqft

Single Family on 0.00 Acres

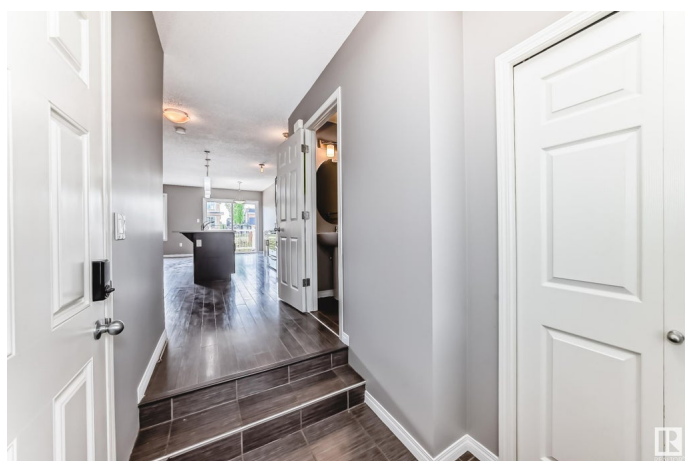
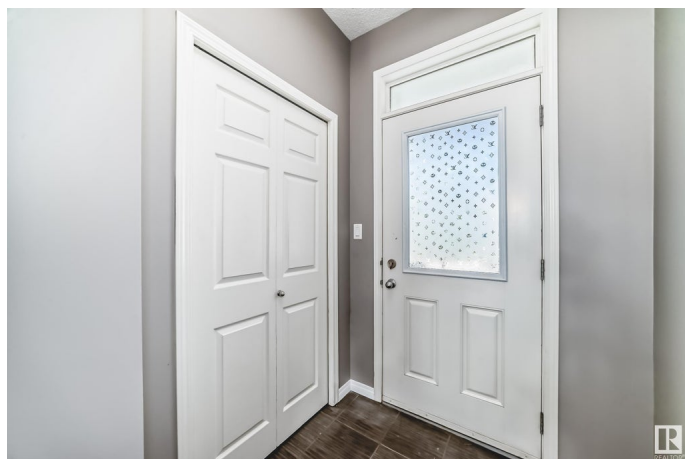
The Orchards At Ellerslie, Edmonton, AB

This beautiful half duplex in a premium lot is a perfect place to call home in one of the sought after communities; Orchard at Ellerslie. This home with single attached garage is an ideal for any first home buyer looking to be a part of this amazing community in the South West. The home features 3 bedrooms, 2.5 baths with open concept living and dining room. The spacious living and dining room features tons of natural lights and offers ample cabinetry space, quartz countertops, stainless steel appliances. The upstairs include a laundry room which is very perfect from convenience view point, a 4 pc bathroom, 3 bedrooms including master bedroom with 4 pc private ensuite and walking closet. The full but unfinished basement offers plenty of space for future development. Walking trail behind the house is another asset. Close to all amenities; school, playground, spray park, skating rink. Minutes away to major highways: Anthony Henday and Whitemud Drive.

Built in 2016

Essential Information

MLS® #	E4439606
Price	\$439,900
Bedrooms	3
Bathrooms	2.50



Full Baths	2
Half Baths	1
Square Footage	1,407
Acres	0.00
Year Built	2016
Type	Single Family
Sub-Type	Half Duplex
Style	2 Storey
Status	Active

Community Information

Address	5181 Crabapple Link Link
Area	Edmonton
Subdivision	The Orchards At Ellerslie
City	Edmonton
County	ALBERTA
Province	AB
Postal Code	T6X 1X1

Amenities

Amenities	Deck, Detectors Smoke
Parking	Single Garage Attached

Interior

Interior Features	ensuite bathroom
Appliances	Dishwasher-Built-In, Dryer, Garage Control, Garage Opener, Microwave Hood Fan, Refrigerator, Stove-Electric, Washer
Heating	Forced Air-1, Natural Gas
Stories	2
Has Basement	Yes
Basement	Full, Unfinished

Exterior

Exterior	Wood, Vinyl
Exterior Features	Fenced, Playground Nearby, Public Transportation, Schools, Shopping Nearby, See Remarks
Roof	Asphalt Shingles
Construction	Wood, Vinyl
Foundation	Concrete Perimeter

Additional Information

Date Listed	May 30th, 2025
Days on Market	22
Zoning	Zone 53
HOA Fees	450
HOA Fees Freq.	Annually

DATA IS DEEMED RELIABLE BUT IS NOT GUARANTEED ACCURATE BY THE REALTORS® ASSOCIATION OF EDMONTON. COPYRIGHT 2025 BY THE REALTORS® ASSOCIATION OF EDMONTON. ALL RIGHTS RESERVED.Trademarks are owned or controlled by the Canadian Real Estate Association (CREA) and identify real estate professionals who are members of CREA (REALTOR®, REALTORS®) and/or the quality of services they provide (MLS®, Multiple Listing Service®)

Listing information last updated on June 21st, 2025 at 7:17am MDT