

\$605,000 - 17056 43 Street, Edmonton

MLS® #E4440273

\$605,000

3 Bedroom, 2.50 Bathroom, 1,999 sqft

Single Family on 0.00 Acres

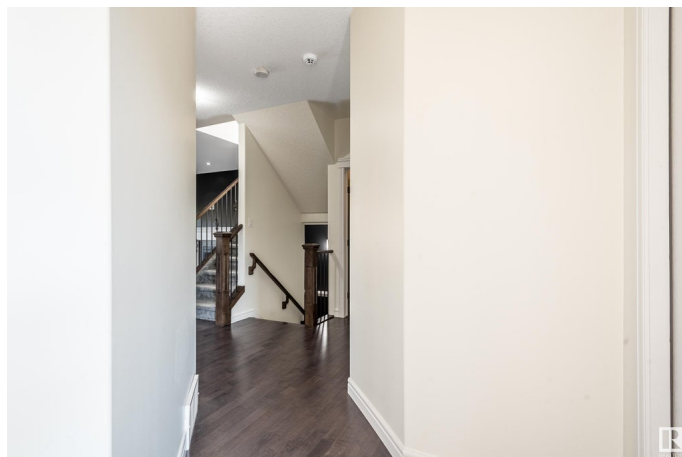
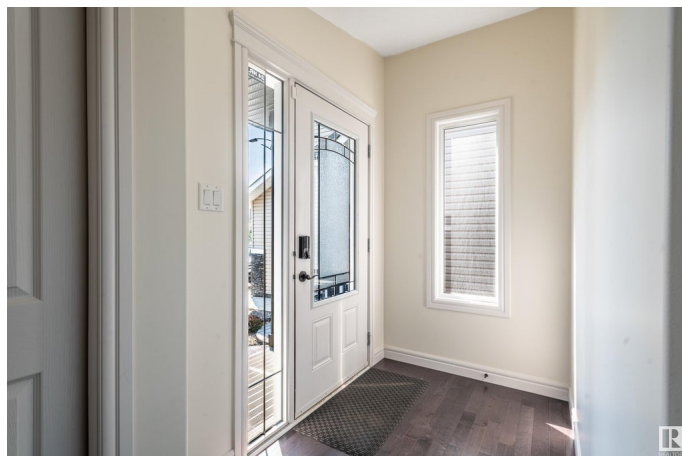
Cy Becker, Edmonton, AB

This stunning 2-storey home offers a perfect balance of comfort, design, and functionality. The main level features 9'™ ceilings, hardwood flooring, fire place, built-in speakers, and an open layout that connects effortlessly with a modern kitchen. Highlights include a gas stove, large granite island, stainless steel appliances, backsplash and pantry – ideal for cooking and entertaining. A den adds flexibility for a home office or quiet retreat. Large windows flood the space with natural light, paired with premium Hunter Douglas top-down bottom-up blinds. Upstairs, the primary bedroom boasts a luxurious ensuite and walk-in closet with custom shelving, along with two more bedrooms and a spacious bonus room. Step outside to a covered deck and backyard oasis with stamped concrete, plus a full BBQ station with built-in cooktop – perfect for outdoor dining and summer nights. Backing onto a walking path, this home was designed to elevate everyday living inside and out. Some photos are virtually staged.

Built in 2015

Essential Information

MLS® #	E4440273
Price	\$605,000
Bedrooms	3



Bathrooms	2.50
Full Baths	2
Half Baths	1
Square Footage	1,999
Acres	0.00
Year Built	2015
Type	Single Family
Sub-Type	Detached Single Family
Style	2 Storey
Status	Active

Community Information

Address	17056 43 Street
Area	Edmonton
Subdivision	Cy Becker
City	Edmonton
County	ALBERTA
Province	AB
Postal Code	T5Y 0Z3

Amenities

Amenities	Barbecue-Built-In, Ceiling 9 ft., Patio
Parking	Double Garage Attached

Interior

Interior Features	ensuite bathroom
Appliances	Dishwasher-Built-In, Dryer, Garage Opener, Microwave Hood Fan, Refrigerator, Stove-Gas, Washer, Window Coverings, See Remarks
Heating	Forced Air-1, Natural Gas
Stories	2
Has Basement	Yes
Basement	Full, Unfinished

Exterior

Exterior	Wood, Vinyl
Exterior Features	Fenced, Landscaped, Park/Reserve, Playground Nearby, Public Transportation, Schools, Shopping Nearby
Roof	Asphalt Shingles
Construction	Wood, Vinyl

Foundation Concrete Perimeter

School Information

Elementary Belvedere School
Middle Steele Heights School
High M.E. LaZerte School

Additional Information

Date Listed June 4th, 2025
Days on Market 29
Zoning Zone 03

DATA IS DEEMED RELIABLE BUT IS NOT GUARANTEED ACCURATE BY THE REALTORS® ASSOCIATION OF EDMONTON. COPYRIGHT 2025 BY THE REALTORS® ASSOCIATION OF EDMONTON. ALL RIGHTS RESERVED.Trademarks are owned or controlled by the Canadian Real Estate Association (CREA) and identify real estate professionals who are members of CREA (REALTOR®, REALTORS®) and/or the quality of services they provide (MLS®, Multiple Listing Service®)
Listing information last updated on July 2nd, 2025 at 11:32pm MDT