

# \$938,000 - 5 Birkshire Crescent, Sherwood Park

MLS® #E4442487

**\$938,000**

3 Bedroom, 3.00 Bathroom, 1,671 sqft  
Single Family on 0.00 Acres

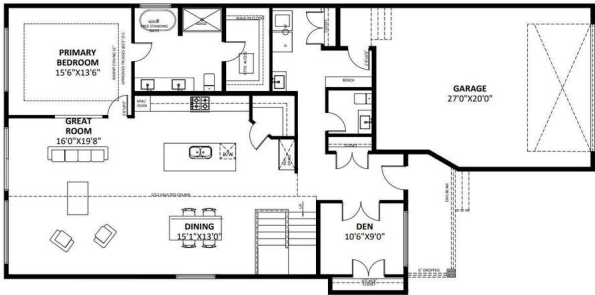
Hillshire, Sherwood Park, AB

Welcome to the Annette floor plan where luxury meets lifestyle in the modern community of Hillshire. This beautifully designed bungalow sits on a 34' pocket lot and offers an incredible layout paired with high-end finishes throughout. With over 3,200 sq ft of total living space including the fully finished basement, this home blends elegance with function. Soaring vaulted ceilings create a bright, open atmosphere, while the thoughtfully designed interior features 3 spacious bedrooms plus a versatile den perfect for a home office or guest space. Every detail has been carefully curated to deliver comfort, sophistication, and timeless style. This is luxury bungalow living at its finest.

Built in 2025

## Essential Information

|                |               |
|----------------|---------------|
| MLS® #         | E4442487      |
| Price          | \$938,000     |
| Bedrooms       | 3             |
| Bathrooms      | 3.00          |
| Full Baths     | 3             |
| Square Footage | 1,671         |
| Acres          | 0.00          |
| Year Built     | 2025          |
| Type           | Single Family |



MAIN FLOOR PLAN 1671 SQ. FT  
GARAGE 543 SQ. FT

|          |                        |
|----------|------------------------|
| Sub-Type | Detached Single Family |
| Style    | Bungalow               |
| Status   | Active                 |

### Community Information

|             |                      |
|-------------|----------------------|
| Address     | 5 Birkshire Crescent |
| Area        | Sherwood Park        |
| Subdivision | Hillshire            |
| City        | Sherwood Park        |
| County      | ALBERTA              |
| Province    | AB                   |
| Postal Code | T8B 0C6              |

### Amenities

|           |                        |
|-----------|------------------------|
| Amenities | See Remarks            |
| Parking   | Double Garage Attached |

### Interior

|                   |                           |
|-------------------|---------------------------|
| Interior Features | ensuite bathroom          |
| Appliances        | See Remarks               |
| Heating           | Forced Air-2, Natural Gas |
| Stories           | 2                         |
| Has Basement      | Yes                       |
| Basement          | Full, Finished            |

### Exterior

|                   |                                       |
|-------------------|---------------------------------------|
| Exterior          | Concrete, Stone, Hardie Board Siding  |
| Exterior Features | Schools, Shopping Nearby, See Remarks |
| Roof              | Asphalt Shingles                      |
| Construction      | Concrete, Stone, Hardie Board Siding  |
| Foundation        | Slab                                  |

### Additional Information

|                |                 |
|----------------|-----------------|
| Date Listed    | June 14th, 2025 |
| Days on Market | 68              |
| Zoning         | Zone 25         |

DATA IS DEEMED RELIABLE BUT IS NOT GUARANTEED ACCURATE BY THE REALTORS® ASSOCIATION OF EDMONTON. COPYRIGHT 2025 BY THE REALTORS® ASSOCIATION OF EDMONTON. ALL RIGHTS RESERVED. Trademarks are owned or controlled by the Canadian Real Estate Association (CREA) and identify real estate professionals who are members of CREA (REALTOR®, REALTORS®) and/or the quality of services they

provide (MLS®®, Multiple Listing Service®®)  
Listing information last updated on August 21st, 2025 at 6:47pm MDT