

\$415,888 - 4310 Prowse Link, Edmonton

MLS® #E4442558

\$415,888

3 Bedroom, 2.50 Bathroom, 1,373 sqft

Single Family on 0.00 Acres

Paisley, Edmonton, AB

Welcome to this inviting home in a vibrant, family-friendly neighborhood! Boasting a spacious layout and incredible potential, it's the perfect canvas to bring your dream home to life. Inside, a bright and airy living room flows into the dining area—ideal for hosting guests or enjoying cozy evenings in. The kitchen features generous counter space and plenty of cabinetry, just waiting for your personal touch. Upstairs, three comfortable bedrooms offer peaceful retreats, complemented by the convenience of laundry on the same floor. A major highlight is the large unfinished basement—ready to become a rec room, extra bedrooms, a home gym, or whatever you imagine. Step outside to a charming backyard, perfect for relaxing, gardening, or summer BBQs. The double detached garage offers secure parking and added storage for your gear and tools. Close to schools, parks, and shopping, this home is filled with potential and waiting for its next chapter!

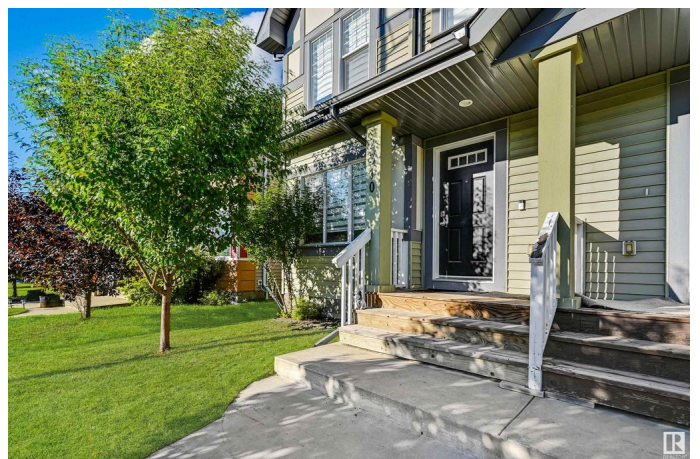
Built in 2015

Essential Information

MLS® # E4442558

Price \$415,888

Bedrooms 3



Bathrooms	2.50
Full Baths	2
Half Baths	1
Square Footage	1,373
Acres	0.00
Year Built	2015
Type	Single Family
Sub-Type	Half Duplex
Style	2 Storey
Status	Active

Community Information

Address	4310 Prowse Link
Area	Edmonton
Subdivision	Paisley
City	Edmonton
County	ALBERTA
Province	AB
Postal Code	T6W 2V4

Amenities

Amenities	Hot Water Natural Gas, No Animal Home, No Smoking Home, See Remarks
Parking	Double Garage Detached

Interior

Interior Features	ensuite bathroom
Appliances	Air Conditioning-Central, Dishwasher-Built-In, Dryer, Hood Fan, Refrigerator, Stove-Electric, Washer
Heating	Forced Air-1, Natural Gas
Stories	2
Has Basement	Yes
Basement	Full, Unfinished

Exterior

Exterior	Wood, Vinyl
Exterior Features	Back Lane, Golf Nearby, Landscaped, Playground Nearby, Public Transportation, Schools, Shopping Nearby, See Remarks
Roof	Asphalt Shingles

Construction Wood, Vinyl
Foundation Concrete Perimeter

School Information

Elementary Steinhauer, J Carr
Middle D.S. Mackenzie, St. Thomas
High Dr. A. Anderson, F M McCaf

Additional Information

Date Listed June 15th, 2025
Days on Market 7
Zoning Zone 55



DATA IS DEEMED RELIABLE BUT IS NOT GUARANTEED ACCURATE BY THE REALTORS® ASSOCIATION OF EDMONTON. COPYRIGHT 2025 BY THE REALTORS® ASSOCIATION OF EDMONTON. ALL RIGHTS RESERVED.Trademarks are owned or controlled by the Canadian Real Estate Association (CREA) and identify real estate professionals who are members of CREA (REALTOR®, REALTORS®) and/or the quality of services they provide (MLS®, Multiple Listing Service®)
Listing information last updated on June 22nd, 2025 at 12:47pm MDT