

# \$475,000 - 29 Sunterra Way, Sherwood Park

MLS® #E4443217

**\$475,000**

3 Bedroom, 3.50 Bathroom, 1,416 sqft  
Single Family on 0.00 Acres

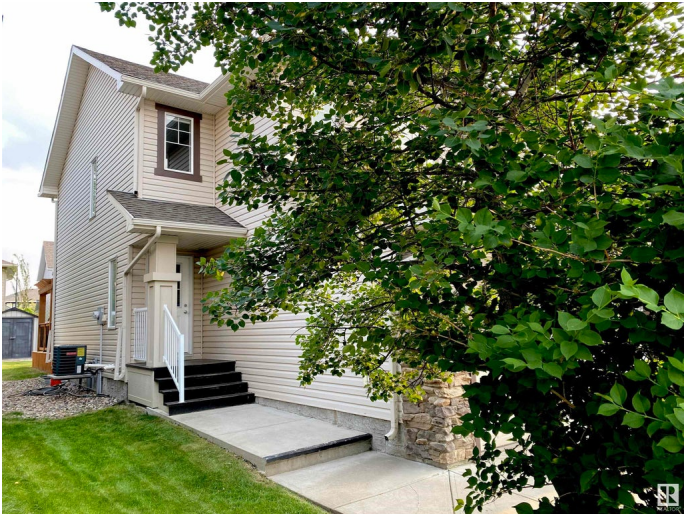
Summerwood, Sherwood Park, AB

This is a pleasant two storey duplex in Sherwood Park, with upgraded finishings and a fully finished basement. Each bedroom has a 3 piece bathroom to match, with a 2 piece bathroom on the main floor. Central air conditioning for those hot summer days, and a huge south facing deck for relaxing in the sun. A gas fireplace for added warmth during those colder seasons, and a gas range for the serious cook in the family. Central vac and a gas barbecue hookup for added convenience. Double attached garage and a large driveway for parking. Located on a quiet street.

Built in 2011

## Essential Information

|                |               |
|----------------|---------------|
| MLS® #         | E4443217      |
| Price          | \$475,000     |
| Bedrooms       | 3             |
| Bathrooms      | 3.50          |
| Full Baths     | 3             |
| Half Baths     | 1             |
| Square Footage | 1,416         |
| Acres          | 0.00          |
| Year Built     | 2011          |
| Type           | Single Family |
| Sub-Type       | Half Duplex   |



|        |          |
|--------|----------|
| Style  | 2 Storey |
| Status | Active   |

### Community Information

|             |                 |
|-------------|-----------------|
| Address     | 29 Sunterra Way |
| Area        | Sherwood Park   |
| Subdivision | Summerwood      |
| City        | Sherwood Park   |
| County      | ALBERTA         |
| Province    | AB              |
| Postal Code | T8H 0R3         |

### Amenities

|           |                                                                                                                     |
|-----------|---------------------------------------------------------------------------------------------------------------------|
| Amenities | Air Conditioner, Carbon Monoxide Detectors, Deck, Hot Water Natural Gas, No Smoking Home, Smart/Program. Thermostat |
| Parking   | Double Garage Attached, Front Drive Access                                                                          |

### Interior

|                   |                                                                                                                                                                                                                   |
|-------------------|-------------------------------------------------------------------------------------------------------------------------------------------------------------------------------------------------------------------|
| Interior Features | ensuite bathroom                                                                                                                                                                                                  |
| Appliances        | Air Conditioning-Central, Dishwasher-Built-In, Dryer, Garage Control, Garage Opener, Humidifier-Power(Furnace), Microwave Hood Fan, Oven-Microwave, Refrigerator, Storage Shed, Stove-Gas, Vacuum Systems, Washer |
| Heating           | Forced Air-1, Natural Gas                                                                                                                                                                                         |
| Fireplace         | Yes                                                                                                                                                                                                               |
| Fireplaces        | Direct Vent                                                                                                                                                                                                       |
| Stories           | 3                                                                                                                                                                                                                 |
| Has Basement      | Yes                                                                                                                                                                                                               |
| Basement          | Full, Finished                                                                                                                                                                                                    |

### Exterior

|                   |                                                             |
|-------------------|-------------------------------------------------------------|
| Exterior          | Wood, Stone, Vinyl                                          |
| Exterior Features | Fenced, Landscaped, Public Transportation, Vegetable Garden |
| Roof              | Asphalt Shingles                                            |
| Construction      | Wood, Stone, Vinyl                                          |
| Foundation        | Concrete Perimeter                                          |

### Additional Information

|                |                 |
|----------------|-----------------|
| Date Listed    | June 19th, 2025 |
| Days on Market | 8               |

## Zoning

## Zone 25

DATA IS DEEMED RELIABLE BUT IS NOT GUARANTEED ACCURATE BY THE REALTORS® ASSOCIATION OF EDMONTON. COPYRIGHT 2025 BY THE REALTORS® ASSOCIATION OF EDMONTON. ALL RIGHTS RESERVED. Trademarks are owned or controlled by the Canadian Real Estate Association (CREA) and identify real estate professionals who are members of CREA (REALTOR®, REALTORS®) and/or the quality of services they provide (MLS®, Multiple Listing Service®)

Listing information last updated on June 27th, 2025 at 6:17pm MDT