

\$350,000 - 71 Hartwick Loop, Spruce Grove

MLS® #E4443284

\$350,000

2 Bedroom, 2.50 Bathroom, 1,412 sqft

Single Family on 0.00 Acres

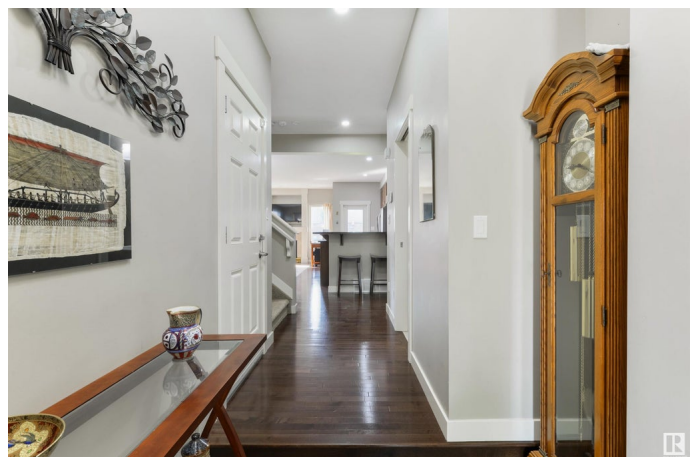
Harvest Ridge, Spruce Grove, AB

Perfect for investors or first-time home buyers! This half duplex features central A/C, hardwood flooring, lovely kitchen with rich wood tones, full-height cabinetry, raised breakfast bar, stainless appliances, side pantry, & separate dinette, a cozy living room with gas fireplace, 2pc powder room off the single-attached garage, upstairs laundry, and TWO ownerâ€™s suites â€“ each with their own walk-in closets & 4pc ensuites. Outside youâ€™ll find the yard is landscaped & fenced with a desirable SOUTH-FACING exposure & NO REAR NEIGHBOURS!! Within walking distance to schools, playgrounds & trails, youâ€™ll love the location here.

Built in 2009

Essential Information

MLS® #	E4443284
Price	\$350,000
Bedrooms	2
Bathrooms	2.50
Full Baths	2
Half Baths	1
Square Footage	1,412
Acres	0.00
Year Built	2009
Type	Single Family



Sub-Type	Half Duplex
Style	2 Storey
Status	Active

Community Information

Address	71 Hartwick Loop
Area	Spruce Grove
Subdivision	Harvest Ridge
City	Spruce Grove
County	ALBERTA
Province	AB
Postal Code	T7X 0A5

Amenities

Amenities	Air Conditioner, Deck, See Remarks
Parking	Single Garage Attached

Interior

Interior Features	ensuite bathroom
Appliances	Alarm/Security System, Dishwasher-Built-In, Dryer, Microwave Hood Fan, Refrigerator, Storage Shed, Stove-Electric, Washer, Window Coverings
Heating	Forced Air-1, Natural Gas
Fireplace	Yes
Fireplaces	See Remarks
Stories	2
Has Basement	Yes
Basement	Full, Unfinished

Exterior

Exterior	Wood, Stone, Vinyl
Exterior Features	Fenced, Landscaped, Playground Nearby, Public Transportation, Schools, Shopping Nearby, See Remarks
Roof	Asphalt Shingles
Construction	Wood, Stone, Vinyl
Foundation	Concrete Perimeter

Additional Information

Date Listed	June 19th, 2025
Days on Market	8

Zoning

Zone 91

DATA IS DEEMED RELIABLE BUT IS NOT GUARANTEED ACCURATE BY THE REALTORS® ASSOCIATION OF EDMONTON. COPYRIGHT 2025 BY THE REALTORS® ASSOCIATION OF EDMONTON. ALL RIGHTS RESERVED. Trademarks are owned or controlled by the Canadian Real Estate Association (CREA) and identify real estate professionals who are members of CREA (REALTOR®, REALTORS®) and/or the quality of services they provide (MLS®, Multiple Listing Service®)

Listing information last updated on June 27th, 2025 at 2:03pm MDT