

Courtesy Of Max Segal Of Real Broker

\$475,000 - 124 Christina Way, Sherwood Park

MLS® #E4443386

\$475,000

4 Bedroom, 2.00 Bathroom, 1,034 sqft

Single Family on 0.00 Acres

Lakeland Ridge, Sherwood Park, AB

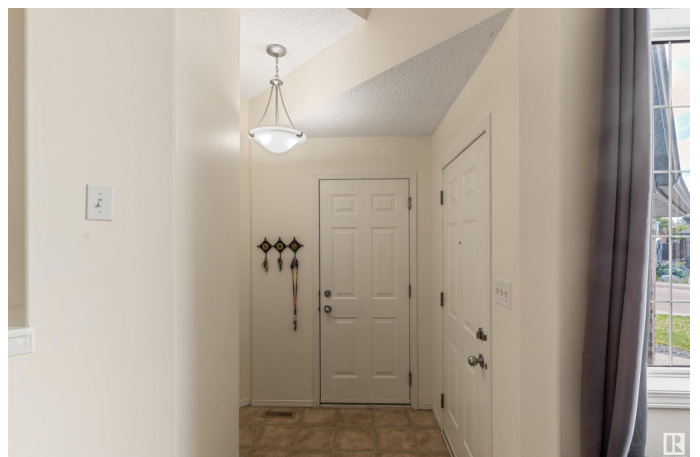
Welcome to 124 Christina Way in the heart of Lakeland Ridge, Sherwood Park! This beautifully maintained 1,040 sq ft bungalow offers a perfect blend of comfort, functionality, and curb appeal. Step inside to find a bright, open-concept living space featuring a cozy living room and a spacious kitchen with ample cabinetry and a dining area ideal for family gatherings. Enjoy year-round comfort with central air conditioning and the added benefit of a fully finished basement, providing an extra bedrooms, a large rec room, and abundant storage. The main floor features a vaulted ceiling, three generous bedrooms, a full bath, while the basement adds a second full bathroom for convenience. Step out onto the durable composite deck—perfect for BBQs and relaxing summer evenings. The fully fenced yard is great for kids, pets, or quiet enjoyment. With an attached double garage and located close to schools, parks, and amenities, this move-in-ready home is ideal for families, downsizers, upsizers, or first-time buyers!

Built in 2004

Essential Information

MLS® # E4443386

Price \$475,000



Bedrooms	4
Bathrooms	2.00
Full Baths	2
Square Footage	1,034
Acres	0.00
Year Built	2004
Type	Single Family
Sub-Type	Detached Single Family
Style	Bungalow
Status	Active

Community Information

Address	124 Christina Way
Area	Sherwood Park
Subdivision	Lakeland Ridge
City	Sherwood Park
County	ALBERTA
Province	AB
Postal Code	T8H 2K5

Amenities

Amenities	Off Street Parking, On Street Parking, Air Conditioner, Deck, Vaulted Ceiling, See Remarks
Parking	Double Garage Attached, Over Sized

Interior

Appliances	Dryer, Oven-Microwave, Refrigerator, Stove-Electric, Washer
Heating	Forced Air-1, Natural Gas
Stories	2
Has Basement	Yes
Basement	Full, Finished

Exterior

Exterior	Wood, Brick, Vinyl
Exterior Features	Fenced, Golf Nearby, Landscaped, Schools, Shopping Nearby, See Remarks
Roof	Asphalt Shingles
Construction	Wood, Brick, Vinyl
Foundation	Concrete Perimeter

Additional Information

Date Listed June 19th, 2025
Days on Market 8
Zoning Zone 25

DATA IS DEEMED RELIABLE BUT IS NOT GUARANTEED ACCURATE BY THE REALTORS® ASSOCIATION OF EDMONTON. COPYRIGHT 2025 BY THE REALTORS® ASSOCIATION OF EDMONTON. ALL RIGHTS RESERVED.Trademarks are owned or controlled by the Canadian Real Estate Association (CREA) and identify real estate professionals who are members of CREA (REALTOR®, REALTORS®) and/or the quality of services they provide (MLS®, Multiple Listing Service®)
Listing information last updated on June 27th, 2025 at 7:02pm MDT