

\$180,000 - 105 10636 120 Street, Edmonton

MLS® #E4443565

\$180,000

2 Bedroom, 1.00 Bathroom, 863 sqft

Condo / Townhouse on 0.00 Acres

Queen Mary Park, Edmonton, AB

Conveniently located in the Brewery District, this newly renovated unit is close to all amenities—shopping centers, golf, gyms, restaurants, transit, social hubs, and within walking distance to Rogers Place. Ideal for students attending MacEwan or U of A. The complex features a unique central green space with a scenic walking path—perfect for dog walks, picnics, or relaxing. This unit includes new paint, baseboards, refinished cupboards, and custom quartz kitchen counters. Enjoy upgraded vinyl plank flooring, new doors, trims, a brand new washer/dryer, and stainless steel appliances. The bathroom has been fully upgraded with a new vanity, toilet, bathtub, and fixtures. Plumbing has been updated with separate shut-off valves exclusive to this unit—rare in the complex. Enjoy morning coffee with serene views of the landscaped courtyard. A/C attachment included. One extra parking stall currently rented for \$50/month. Move-in ready with thoughtful upgrades throughout.

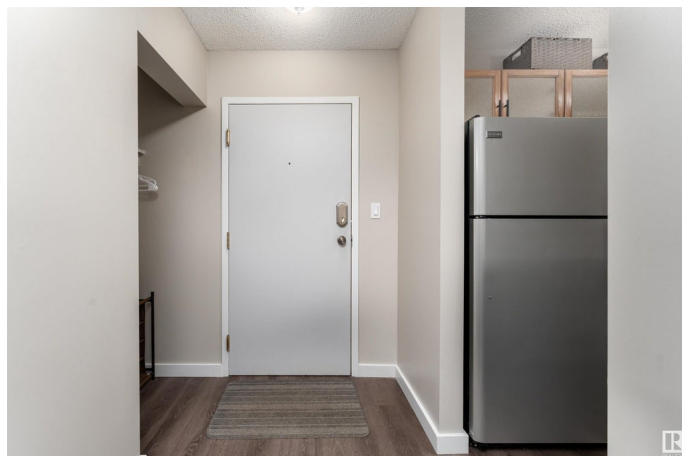
Built in 1993

Essential Information

MLS® # E4443565

Price \$180,000

Bedrooms 2



Bathrooms	1.00
Full Baths	1
Square Footage	863
Acres	0.00
Year Built	1993
Type	Condo / Townhouse
Sub-Type	Lowrise Apartment
Style	Single Level Apartment
Status	Active

Community Information

Address	105 10636 120 Street
Area	Edmonton
Subdivision	Queen Mary Park
City	Edmonton
County	ALBERTA
Province	AB
Postal Code	T5H 4L5

Amenities

Amenities	Detectors Smoke, No Smoking Home
Parking	Stall

Interior

Appliances	Dishwasher-Built-In, Dryer, Refrigerator, Stove-Electric, Washer, Window Coverings, Curtains and Blinds
Heating	Hot Water, Natural Gas
# of Stories	4
Stories	1
Has Basement	Yes
Basement	None, No Basement

Exterior

Exterior	Wood, Stucco
Exterior Features	Back Lane, Backs Onto Park/Trees, Corner Lot, Fenced, Fruit Trees/Shrubs, Golf Nearby, Landscaped, Picnic Area, Playground Nearby, Public Transportation, Schools, Shopping Nearby, View Downtown
Roof	Asphalt Shingles

Construction	Wood, Stucco
Foundation	Concrete Perimeter

Additional Information

Date Listed	June 20th, 2025
Days on Market	1
Zoning	Zone 08
Condo Fee	\$418

DATA IS DEEMED RELIABLE BUT IS NOT GUARANTEED ACCURATE BY THE REALTORS® ASSOCIATION OF EDMONTON. COPYRIGHT 2025 BY THE REALTORS® ASSOCIATION OF EDMONTON. ALL RIGHTS RESERVED.Trademarks are owned or controlled by the Canadian Real Estate Association (CREA) and identify real estate professionals who are members of CREA (REALTOR®, REALTORS®) and/or the quality of services they provide (MLS®, Multiple Listing Service®)

Listing information last updated on June 21st, 2025 at 12:32pm MDT