

\$364,500 - 317 501 Palisades Way, Sherwood Park

MLS® #E4444026

\$364,500

2 Bedroom, 2.00 Bathroom, 1,127 sqft

Condo / Townhouse on 0.00 Acres

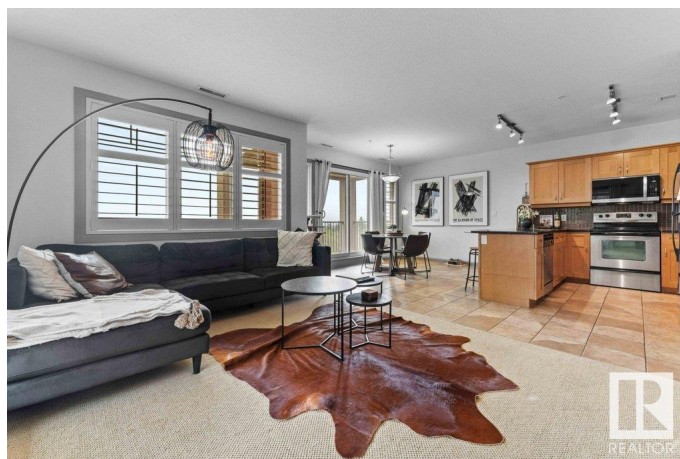
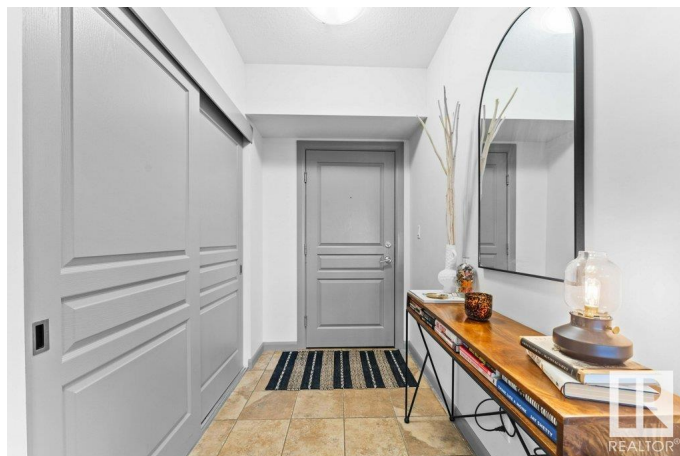
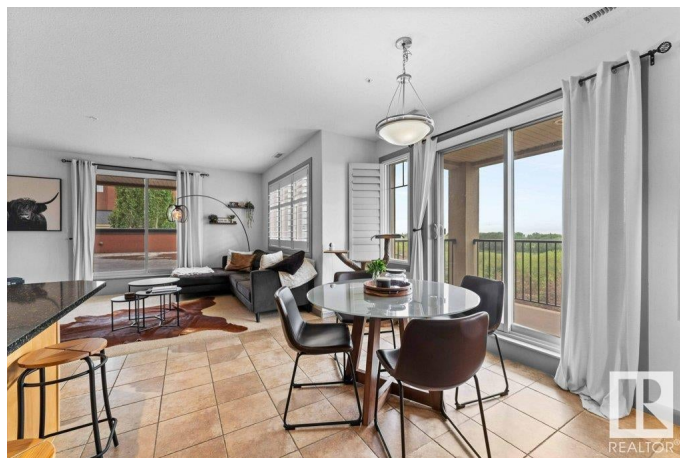
Centennial Village, Sherwood Park, AB

****First time on the market!**** This immaculate **NORTHWEST CORNER UNIT** features 2 Bedrooms, and 2 full Bathrooms. The Palisades Condo offers luxury and convenience in a adult living - quiet cul-de-sac area backing onto a beautiful park. Enjoy **TWO** private balconies, an oversized outdoor space perfect for those entertaining - one balcony is north facing, the larger one west facing. Featuring granite countertops throughout, the kitchen offers open concept with a large dining area. Completing the unit is an extra-large in-unit storage space with in-suite washer and dryer, a underground separate storage unit, and two parking stalls—one underground and one covered with plug-in. Located in desirable Sherwood Park, near Emerald Hills, this rare gem combines comfort, space, and tranquility. Donâ€™t miss this unique opportunity!

Built in 2008

Essential Information

MLS® #	E4444026
Price	\$364,500
Bedrooms	2
Bathrooms	2.00
Full Baths	2
Square Footage	1,127
Acres	0.00



Year Built	2008
Type	Condo / Townhouse
Sub-Type	Lowrise Apartment
Style	Single Level Apartment
Status	Active

Community Information

Address	317 501 Palisades Way
Area	Sherwood Park
Subdivision	Centennial Village
City	Sherwood Park
County	ALBERTA
Province	AB
Postal Code	T8H 0H8

Amenities

Amenities	Closet Organizers, Deck, Detectors Smoke, No Smoking Home, Patio, Social Rooms, See Remarks, Storage Cage
Parking Spaces	2
Parking	Stall, Underground

Interior

Interior Features	ensuite bathroom
Appliances	Dishwasher-Built-In, Dryer, Refrigerator, Stove-Electric, Washer, Window Coverings
Heating	Forced Air-1, Natural Gas
# of Stories	4
Stories	4
Has Basement	Yes
Basement	None, No Basement

Exterior

Exterior	Concrete, Stucco
Exterior Features	Backs Onto Park/Trees, Cul-De-Sac, Fruit Trees/Shrubs, Landscaped, No Through Road, Playground Nearby, Schools, Shopping Nearby, See Remarks
Roof	EPDM Membrane
Construction	Concrete, Stucco
Foundation	Concrete Perimeter

Additional Information

Date Listed	June 24th, 2025
Days on Market	3
Zoning	Zone 25
Condo Fee	\$728

DATA IS DEEMED RELIABLE BUT IS NOT GUARANTEED ACCURATE BY THE REALTORS® ASSOCIATION OF EDMONTON. COPYRIGHT 2025 BY THE REALTORS® ASSOCIATION OF EDMONTON. ALL RIGHTS RESERVED.Trademarks are owned or controlled by the Canadian Real Estate Association (CREA) and identify real estate professionals who are members of CREA (REALTOR®, REALTORS®) and/or the quality of services they provide (MLS®, Multiple Listing Service®)

Listing information last updated on June 27th, 2025 at 4:47pm MDT