

\$479,000 - 126 Greystone Crescent, Spruce Grove

MLS® #E4444250

\$479,000

4 Bedroom, 3.50 Bathroom, 1,563 sqft

Single Family on 0.00 Acres

Grove Meadows, Spruce Grove, AB

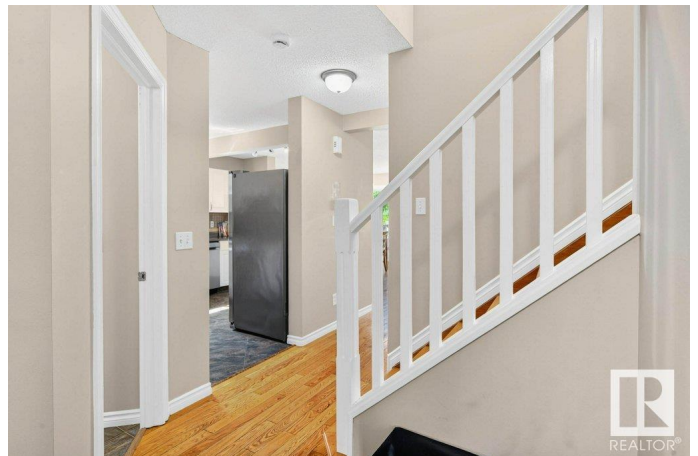
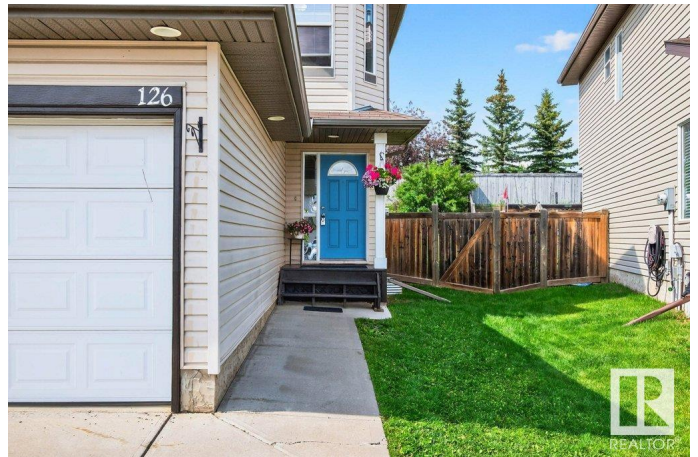
Welcome to this beautiful 4 bedroom family home with 4 - baths in Spruce Grove! Featuring a brand new fully finished basement with a bedroom, bathroom and a large family room, this home offers plenty of space for every family member. The open-concept main floor, with an open concept kitchen & living space, has a functional layout, and is perfect for gatherings. The kitchen has lots of cabinets, a breakfast counter, and great counter space. Upstairs, youâ€™™ll find 2 good-sized bedrooms and a comfortable KING SIZED Primary suite with a private ensuite and a large walk-in closet. The double attached garage provides convenience year-round, and the fully landscaped yard is ready for kids, pets, or summer BBQs. Located close to excellent schools, parks, and walking paths, this home is ideal for a growing family. Plus, with quick access to both Highway 16 and 16A, commuting to Edmonton or surrounding areas is fast and easy. This move-in-ready home offers the perfect blend of space, style, and location!

Built in 2006

Essential Information

MLS® # E4444250

Price \$479,000



Bedrooms	4
Bathrooms	3.50
Full Baths	3
Half Baths	1
Square Footage	1,563
Acres	0.00
Year Built	2006
Type	Single Family
Sub-Type	Detached Single Family
Style	2 Storey
Status	Active

Community Information

Address	126 Greystone Crescent
Area	Spruce Grove
Subdivision	Grove Meadows
City	Spruce Grove
County	ALBERTA
Province	AB
Postal Code	T7X 0A7

Amenities

Amenities	Deck, Detectors Smoke, Hot Water Natural Gas, No Animal Home, No Smoking Home, Vinyl Windows
Parking Spaces	4
Parking	Double Garage Attached

Interior

Interior Features	ensuite bathroom
Appliances	Dishwasher-Built-In, Dryer, Garage Control, Garage Opener, Hood Fan, Oven-Microwave, Refrigerator, Stove-Electric, Washer, Window Coverings
Heating	Forced Air-1, Natural Gas
Stories	3
Has Basement	Yes
Basement	Full, Finished

Exterior

Exterior	Wood, Vinyl
----------	-------------

Exterior Features	Fenced, Low Maintenance Landscape, Playground Nearby, Schools
Roof	Asphalt Shingles
Construction	Wood, Vinyl
Foundation	Concrete Perimeter

School Information

Elementary	Greystone
Middle	St. Thomas
High	Composite

Additional Information

Date Listed	June 25th, 2025
Days on Market	2
Zoning	Zone 91

DATA IS DEEMED RELIABLE BUT IS NOT GUARANTEED ACCURATE BY THE REALTORS® ASSOCIATION OF EDMONTON. COPYRIGHT 2025 BY THE REALTORS® ASSOCIATION OF EDMONTON. ALL RIGHTS RESERVED.Trademarks are owned or controlled by the Canadian Real Estate Association (CREA) and identify real estate professionals who are members of CREA (REALTOR®, REALTORS®) and/or the quality of services they provide (MLS®, Multiple Listing Service®)

Listing information last updated on June 27th, 2025 at 4:47pm MDT