

\$225,000 - 5722 143 Avenue, Edmonton

MLS® #E4444434

\$225,000

3 Bedroom, 1.50 Bathroom, 1,151 sqft

Condo / Townhouse on 0.00 Acres

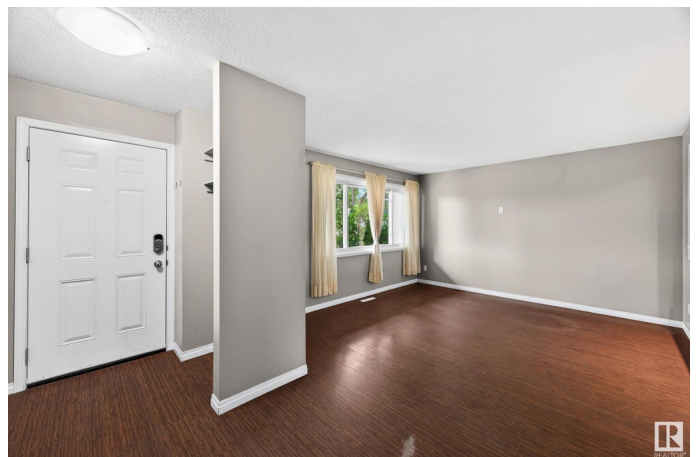
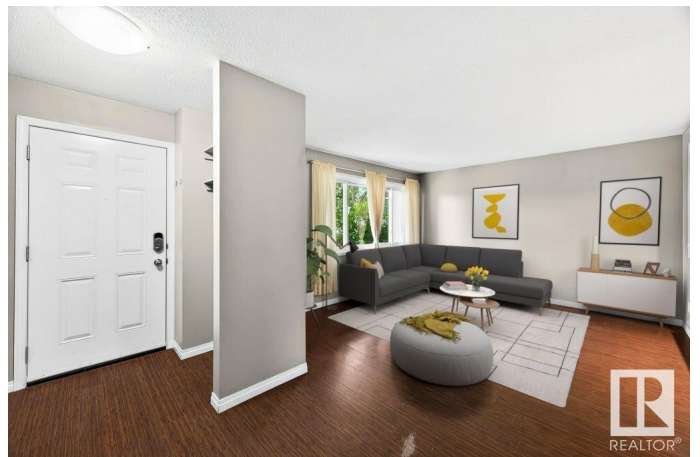
York, Edmonton, AB

Welcome to this well-kept 3-bedroom, 2-bathroom townhome offering comfortable living with thoughtful updates. Inside, you'll find generous room sizes and an upgraded kitchen with ample cabinetry and storage, making meal prep and daily living easy. The main living area flows nicely to the private, fenced backyard—perfect for relaxing or entertaining—while backing onto peaceful greenspace for added privacy. Upstairs, the bedrooms are spacious with good light and functional layout. This home is ideally situated near shopping, schools, and transit, providing convenient access to daily needs. A practical choice for anyone seeking space, value, and location.

Built in 1967

Essential Information

MLS® #	E4444434
Price	\$225,000
Bedrooms	3
Bathrooms	1.50
Full Baths	1
Half Baths	1
Square Footage	1,151
Acres	0.00
Year Built	1967



Type	Condo / Townhouse
Sub-Type	Townhouse
Style	2 Storey
Status	Active

Community Information

Address	5722 143 Avenue
Area	Edmonton
Subdivision	York
City	Edmonton
County	ALBERTA
Province	AB
Postal Code	T5A 1K1

Amenities

Amenities	On Street Parking, Detectors Smoke, No Smoking Home, See Remarks
Parking	Stall

Interior

Appliances	Dishwasher-Built-In, Dryer, Oven-Microwave, Refrigerator, Stove-Electric, Washer
Heating	Forced Air-1, Natural Gas
Stories	2
Has Basement	Yes
Basement	Full, Partially Finished

Exterior

Exterior	Wood, Brick
Exterior Features	Fenced, Golf Nearby, Landscaped, Level Land, No Back Lane, Playground Nearby, Public Transportation, Schools, Shopping Nearby, Treed Lot
Roof	Asphalt Shingles
Construction	Wood, Brick
Foundation	Concrete Perimeter

School Information

Elementary	York School
Middle	Steele Heights School
High	M.E. LaZerte School

Additional Information

Date Listed	June 26th, 2025
Days on Market	5
Zoning	Zone 02
Condo Fee	\$424

DATA IS DEEMED RELIABLE BUT IS NOT GUARANTEED ACCURATE BY THE REALTORS® ASSOCIATION OF EDMONTON. COPYRIGHT 2025 BY THE REALTORS® ASSOCIATION OF EDMONTON. ALL RIGHTS RESERVED.Trademarks are owned or controlled by the Canadian Real Estate Association (CREA) and identify real estate professionals who are members of CREA (REALTOR®, REALTORS®) and/or the quality of services they provide (MLS®, Multiple Listing Service®)

Listing information last updated on July 1st, 2025 at 5:32pm MDT