

Courtesy Of Christina A Reid Of Century 21 Leading

\$525,519 - 505 Paterson Way, Edmonton

MLS® #E4450655

\$525,519

3 Bedroom, 2.50 Bathroom, 1,721 sqft
Single Family on 0.00 Acres

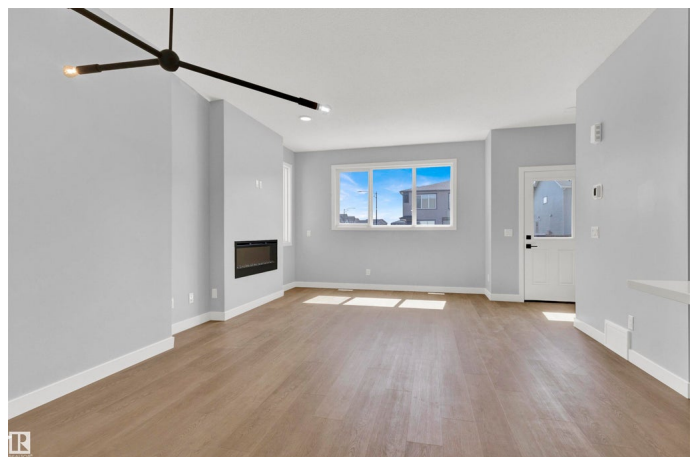
Paisley, Edmonton, AB

FREE 20X20 GARAGE FOR A LIMITED TIME This stylish and functional brand new build home is 1746 sq ft and is located on CORNER LOT with a SOUTH FACING BACKYARD. Corner lots offer additional side windows throughout the home and beautiful architectural details on the exterior. You are welcomed with 9 ft main floor ceilings, a spacious entryway, and TWO living spaces (one featuring a fireplace) on the main floor. We've also included a side entrance, great for potential future legal suite. The upgraded kitchen features 3CM quartz, a french door fridge with internal water and ice, dishwasher, built in microwave, electric range and a chimney hood fan. We've replaced the stubwall with modern spindle railing to further create a spacious feel. Upstairs you'll find 3 large bedrooms and 2 bathrooms. The primary ensuite was upgraded to include an acrylic glass shower. Paisley features a dog park, an agility training course and an abundance of walking trails.

Built in 2025

Essential Information

MLS® #	E4450655
Price	\$525,519
Bedrooms	3



Bathrooms	2.50
Full Baths	2
Half Baths	1
Square Footage	1,721
Acres	0.00
Year Built	2025
Type	Single Family
Sub-Type	Detached Single Family
Style	2 Storey
Status	Active

Community Information

Address	505 Paterson Way
Area	Edmonton
Subdivision	Paisley
City	Edmonton
County	ALBERTA
Province	AB
Postal Code	T6W 4E2

Amenities

Amenities	Carbon Monoxide Detectors, Ceiling 9 ft., Detectors Smoke, Smart/Program. Thermostat, HRV System
Parking	Double Garage Detached

Interior

Interior Features	ensuite bathroom
Appliances	Dishwasher-Built-In, Oven-Microwave, Refrigerator, Stove-Electric
Heating	Forced Air-1, Natural Gas
Fireplace	Yes
Fireplaces	Insert
Stories	2
Has Basement	Yes
Basement	Full, Unfinished

Exterior

Exterior	Wood, Vinyl
Exterior Features	Airport Nearby, Back Lane, Corner Lot, Partially Landscaped, Playground Nearby, Public Transportation, Schools, Shopping Nearby

Roof	Asphalt Shingles
Construction	Wood, Vinyl
Foundation	Concrete Perimeter

School Information

Elementary	STEINHAUER K-6
Middle	D.S. MACKENZIE
High	DR. ANNE ANDERSON

Additional Information

Date Listed	July 31st, 2025
Days on Market	7
Zoning	Zone 55

DATA IS DEEMED RELIABLE BUT IS NOT GUARANTEED ACCURATE BY THE REALTORS® ASSOCIATION OF EDMONTON. COPYRIGHT 2025 BY THE REALTORS® ASSOCIATION OF EDMONTON. ALL RIGHTS RESERVED. Trademarks are owned or controlled by the Canadian Real Estate Association (CREA) and identify real estate professionals who are members of CREA (REALTOR®, REALTORS®) and/or the quality of services they provide (MLS®, Multiple Listing Service®)

Listing information last updated on August 7th, 2025 at 5:17am MDT