

\$719,900 - 6219 King Vista Vista, Edmonton

MLS® #E4451175

\$719,900

3 Bedroom, 2.50 Bathroom, 2,273 sqft

Single Family on 0.00 Acres

Keswick Area, Edmonton, AB

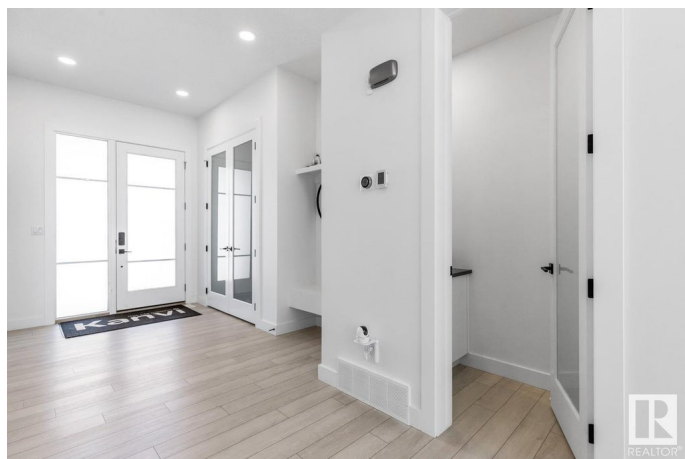
A Kanvi Homes build in Arbours of Keswick beside the pond, with a spacious 10-foot-tall dropped foyer opening up the entryway into the home. The main floor features an open concept design, with a gallery-style kitchen, 10-foot-long waterfall island, ample pantry storage, a wide dining area, and a 100-inch Napoleon fireplace. The open staircase leading to the second floor features an upper tech space with a built-in desk set-up, a laundry room, a bonus room, two bedrooms, and a split bathroom with dual vanities. The primary bedroom has his and her walk-in closets and dual vanities, and is above the open concept main floor, allowing for natural sunlight, being a south-facing home. The home is equipped with floor-to-ceiling windows, countertop-to-ceiling mirrors in the bathrooms, soft-close Blumotion cabinetry, built-in MDF shelving, 9-foot-tall basement, and a mixture of blinds/blackout blinds throughout. The landscaping is low-maintenance and timeless with a thoughtfully designed backyard.

Built in 2021

Essential Information

MLS® # E4451175

Price \$719,900



Bedrooms	3
Bathrooms	2.50
Full Baths	2
Half Baths	1
Square Footage	2,273
Acres	0.00
Year Built	2021
Type	Single Family
Sub-Type	Detached Single Family
Style	2 Storey
Status	Active

Community Information

Address	6219 King Vista Vista
Area	Edmonton
Subdivision	Keswick Area
City	Edmonton
County	ALBERTA
Province	AB
Postal Code	T6W 3Z8

Amenities

Amenities	Air Conditioner, Ceiling 10 ft., Ceiling 9 ft., No Smoking Home
Parking	Double Garage Attached

Interior

Interior Features	ensuite bathroom
Appliances	Air Conditioning-Central, Dishwasher-Built-In, Dryer, Garage Opener, Hood Fan, Refrigerator, Stove-Electric, Washer
Heating	Forced Air-1, Natural Gas
Stories	2
Has Basement	Yes
Basement	Full, Unfinished

Exterior

Exterior	Wood, Stone, Vinyl
Exterior Features	Airport Nearby, Fenced, Golf Nearby, Landscaped, Low Maintenance Landscape, Playground Nearby, Public Transportation, Schools, Shopping Nearby

Roof	Asphalt Shingles
Construction	Wood, Stone, Vinyl
Foundation	Concrete Perimeter

Additional Information

Date Listed	August 5th, 2025
Days on Market	1
Zoning	Zone 56

DATA IS DEEMED RELIABLE BUT IS NOT GUARANTEED ACCURATE BY THE REALTORS® ASSOCIATION OF EDMONTON. COPYRIGHT 2025 BY THE REALTORS® ASSOCIATION OF EDMONTON. ALL RIGHTS RESERVED.Trademarks are owned or controlled by the Canadian Real Estate Association (CREA) and identify real estate professionals who are members of CREA (REALTOR®, REALTORS®) and/or the quality of services they provide (MLS®, Multiple Listing Service®)

Listing information last updated on August 6th, 2025 at 2:47pm MDT