

Courtesy Of Loral K Walker Of 2% Realty

\$524,900 - 2 Laydon Drive, St. Albert

MLS® #E4451519

\$524,900

4 Bedroom, 2.50 Bathroom, 1,227 sqft
Single Family on 0.00 Acres

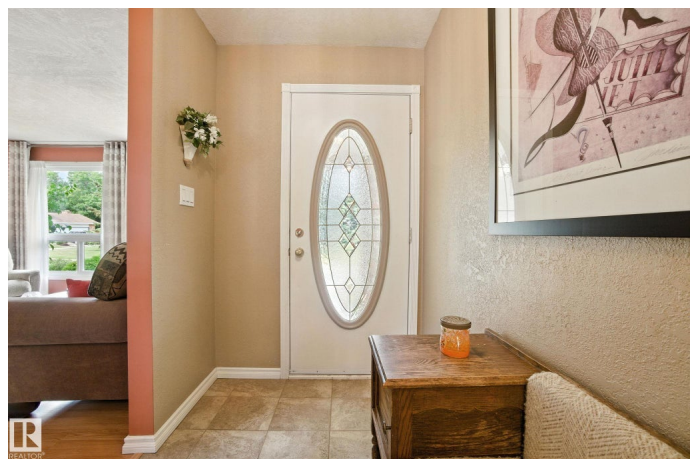
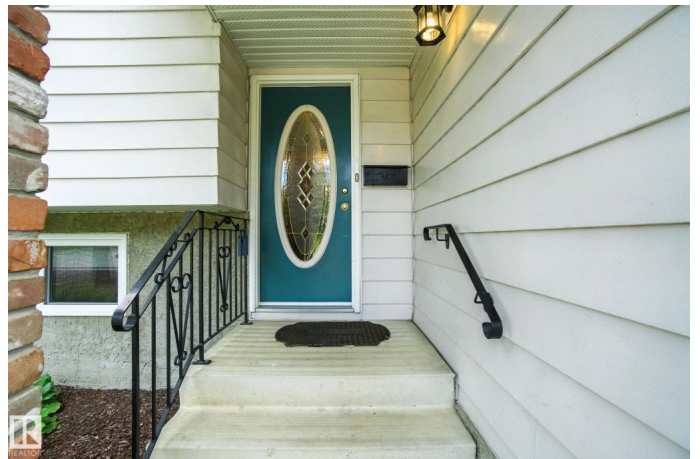
Lacombe Park, St. Albert, AB

Welcome to this immaculate 4-level split with almost 2400 sq ft of finished living space, with 4 beds, 3 baths, oversized double garage, front drive extra parking and too many features to list! On the main floor you're greeted by a generous entryway that flows into an open-concept living, dining and kitchen. The kitchen features custom cabinetry, abundant storage, and plenty of counter space. Upstairs, you'll find the primary bedroom with 2 piece ensuite, 2 additional bedrooms and 4 piece bath. The third level offers a spacious family room with wood-burning fireplace, 4th bedroom and a 3 piece bath. On the lowest level, there's a large laundry room, rec room and additional storage. This home includes numerous upgrades: new shingles (2020), high-efficiency furnace and hot water tank (2020) and added attic insulation. The tile flooring is durable porcelain and there's a built-in vacuum system. Enjoy the outdoors in the large, private, beautifully groomed backyard with firepit. Great location close to everything, a must see!

Built in 1975

Essential Information

MLS® #	E4451519
Price	\$524,900



Bedrooms	4
Bathrooms	2.50
Full Baths	2
Half Baths	1
Square Footage	1,227
Acres	0.00
Year Built	1975
Type	Single Family
Sub-Type	Detached Single Family
Style	4 Level Split
Status	Active

Community Information

Address	2 Laydon Drive
Area	St. Albert
Subdivision	Lacombe Park
City	St. Albert
County	ALBERTA
Province	AB
Postal Code	T8N 2N2

Amenities

Amenities	On Street Parking, Deck, Detectors Smoke, Fire Pit, Insulation-Upgraded, No Smoking Home, Vinyl Windows
Parking Spaces	6
Parking	Double Garage Detached, Over Sized, Parking Pad Cement/Paved, RV Parking

Interior

Interior Features	ensuite bathroom
Appliances	Dishwasher-Built-In, Dryer, Garage Control, Garage Opener, Hood Fan, Refrigerator, Storage Shed, Stove-Electric, Vacuum System Attachments, Vacuum Systems, Washer, Window Coverings
Heating	Forced Air-1, Natural Gas
Fireplace	Yes
Fireplaces	Masonry
Stories	4
Has Basement	Yes
Basement	Full, Finished

Exterior

Exterior	Wood, Brick, Vinyl
Exterior Features	Corner Lot, Fenced, Landscaped, Playground Nearby, Public Transportation, Schools, Shopping Nearby
Roof	Asphalt Shingles
Construction	Wood, Brick, Vinyl
Foundation	Concrete Perimeter

School Information

Elementary	Ronald Harvey
Middle	William D. Cuts
High	Bellerose Composite

Additional Information

Date Listed	August 6th, 2025
Days on Market	18
Zoning	Zone 24

DATA IS DEEMED RELIABLE BUT IS NOT GUARANTEED ACCURATE BY THE REALTORS® ASSOCIATION OF EDMONTON. COPYRIGHT 2025 BY THE REALTORS® ASSOCIATION OF EDMONTON. ALL RIGHTS RESERVED. Trademarks are owned or controlled by the Canadian Real Estate Association (CREA) and identify real estate professionals who are members of CREA (REALTOR®, REALTORS®) and/or the quality of services they provide (MLS®, Multiple Listing Service®)

Listing information last updated on August 23rd, 2025 at 9:31pm MDT