

\$684,000 - 12031 124 Street, Edmonton

MLS® #E4451821

\$684,000

3 Bedroom, 3.00 Bathroom, 1,869 sqft
Single Family on 0.00 Acres

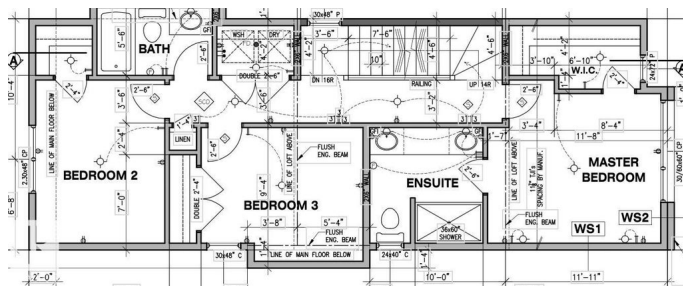
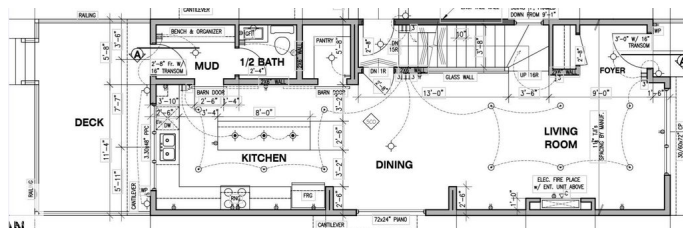
Prince Charles, Edmonton, AB

Beautiful custom 3-storey home in the quiet, tree-lined community of Prince Charles. Perfect for the professional family, this modern home offers high-end finishes and space for everyone. The main floor features an open layout with a bright living room and fireplace, a stylish dining area, and a chef's kitchen with quartz countertops, premium cabinets, black fixtures, and a large island. Step onto the back deck for peaceful outdoor living. Upstairs, the primary bedroom includes a walk-in closet and private ensuite with double sinks and a glass shower. Two more bedrooms, a full bath, and laundry complete this level. The top-floor loft is ideal for an office, reading area, or media room, with an oversized private balcony overlooking the park and mature trees. Fully landscaped front and back. A separate side entrance to the basement offers future suite potential. Just minutes from downtown, schools, parks, shopping, and transit—this is modern living in a beautiful, established neighborhood.

Built in 2025

Essential Information

MLS® #	E4451821
Price	\$684,000
Bedrooms	3



Bathrooms	3.00
Full Baths	2
Half Baths	2
Square Footage	1,869
Acres	0.00
Year Built	2025
Type	Single Family
Sub-Type	Detached Single Family
Style	3 Storey
Status	Active

Community Information

Address	12031 124 Street
Area	Edmonton
Subdivision	Prince Charles
City	Edmonton
County	ALBERTA
Province	AB
Postal Code	T5L 0M8

Amenities

Amenities	Deck, Hot Water Natural Gas, Infill Property, HRV System, 9 ft. Basement Ceiling
Parking	Double Garage Detached

Interior

Interior Features	ensuite bathroom
Appliances	Dishwasher-Built-In, Hood Fan, Oven-Microwave, Refrigerator, Stove-Gas
Heating	Forced Air-1, Natural Gas
Stories	3
Has Basement	Yes
Basement	Full, Unfinished

Exterior

Exterior	Wood, Vinyl
Exterior Features	Back Lane, Schools, Shopping Nearby
Roof	Asphalt Shingles
Construction	Wood, Vinyl

Foundation Concrete Perimeter

Additional Information

Date Listed August 7th, 2025

Days on Market 13

Zoning Zone 04

DATA IS DEEMED RELIABLE BUT IS NOT GUARANTEED ACCURATE BY THE REALTORS® ASSOCIATION OF EDMONTON. COPYRIGHT 2025 BY THE REALTORS® ASSOCIATION OF EDMONTON. ALL RIGHTS RESERVED. Trademarks are owned or controlled by the Canadian Real Estate Association (CREA) and identify real estate professionals who are members of CREA (REALTOR®, REALTORS®) and/or the quality of services they provide (MLS®, Multiple Listing Service®)

Listing information last updated on August 20th, 2025 at 6:02pm MDT