

## \$228,800 - 5622 148 Street, Edmonton

MLS® #E4454333

**\$228,800**

2 Bedroom, 1.00 Bathroom, 842 sqft

Condo / Townhouse on 0.00 Acres

Brander Gardens, Edmonton, AB

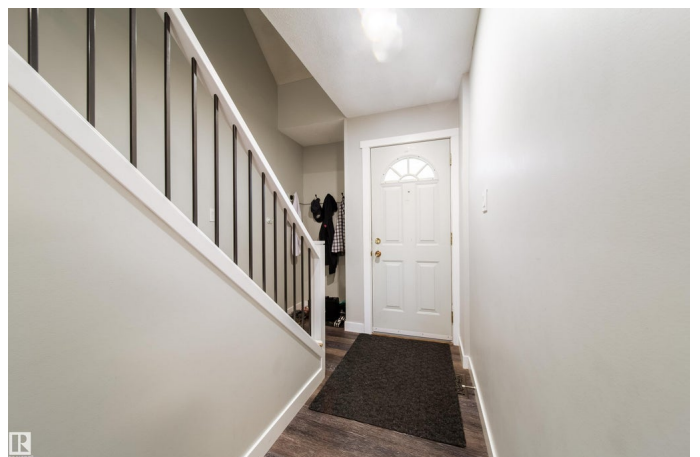
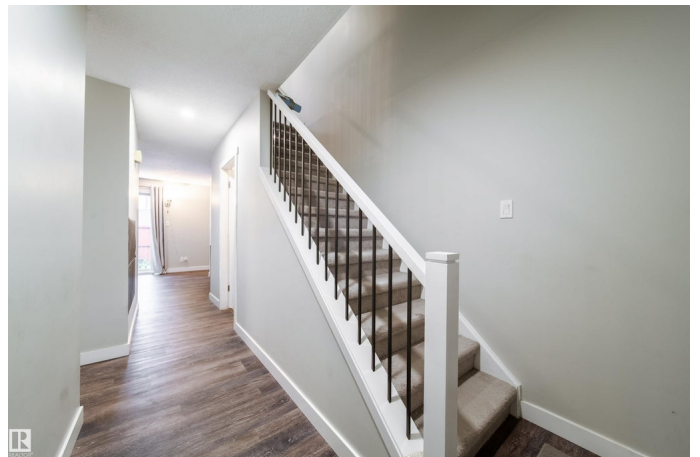
Welcome to this well-maintained townhouse condo unit in Riverbend Gardens! This home is just steps away from a few different well known schools including Tempo School, Brander Garden School and River Bend Junior High School. The River and Parks are just within minutes of walking. The home offers both comfort and convenience. Main floor has living area, kitchen and dining with quartz countertop and modern cabinets. The two well sized bedrooms are located upstairs with a shared bathroom. The basement is unfinished but with plenty of room for storage and an additional set of storage shelves. This also means great potential for future renovation for the new owner. The backyard is fully fenced and backed on the green space, so there is privacy. Nestled in a quiet neighborhood with great access schools, parks, river valley trails, transit, and shopping. Easy access to Whitemud Drive, U of A, Southgate, WEM and Edmonton south common. This is a perfect spot for small families especially with small children.

Built in 1973

### Essential Information

MLS® # E4454333

Price \$228,800



Bedrooms	2
Bathrooms	1.00
Full Baths	1
Square Footage	842
Acres	0.00
Year Built	1973
Type	Condo / Townhouse
Sub-Type	Townhouse
Style	2 Storey
Status	Active

### Community Information

Address	5622 148 Street
Area	Edmonton
Subdivision	Brander Gardens
City	Edmonton
County	ALBERTA
Province	AB
Postal Code	T6H 4T8

### Amenities

Amenities	Hot Tub, Hot Water Natural Gas, No Animal Home, No Smoking Home
Parking	Stall

### Interior

Appliances	Dishwasher - Energy Star, Oven-Microwave, Refrigerator, Stove-Electric, Washer
Heating	Forced Air-1, Natural Gas
Stories	2
Has Basement	Yes
Basement	Full, Unfinished

### Exterior

Exterior	Wood, Vinyl
Exterior Features	Commercial, Playground Nearby, Public Transportation, Schools, Shopping Nearby, Ski Hill Nearby
Roof	Asphalt Shingles
Construction	Wood, Vinyl
Foundation	Concrete Perimeter

## School Information

Elementary	Yes
Middle	Yes

## Additional Information

Date Listed	August 22nd, 2025
Days on Market	41
Zoning	Zone 14
Condo Fee	\$287

DATA IS DEEMED RELIABLE BUT IS NOT GUARANTEED ACCURATE BY THE REALTORS® ASSOCIATION OF EDMONTON. COPYRIGHT 2025 BY THE REALTORS® ASSOCIATION OF EDMONTON. ALL RIGHTS RESERVED. Trademarks are owned or controlled by the Canadian Real Estate Association (CREA) and identify real estate professionals who are members of CREA (REALTOR®, REALTORS®) and/or the quality of services they provide (MLS®, Multiple Listing Service®)

Listing information last updated on October 2nd, 2025 at 7:32pm MDT