

\$429,000 - 12039 123 Street, Edmonton

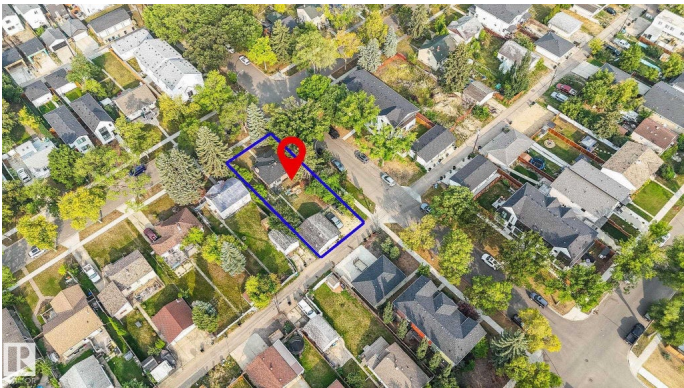
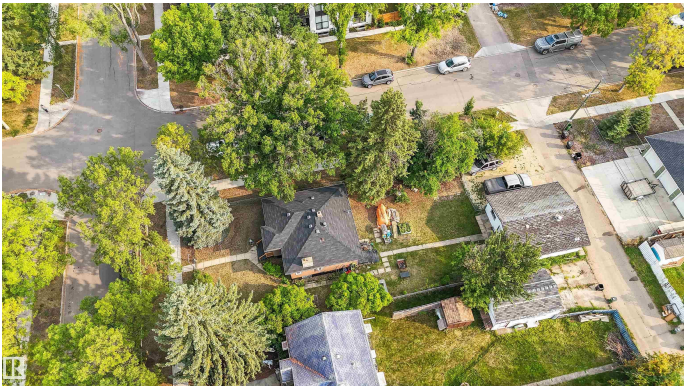
MLS® #E4456128

\$429,000

0 Bedroom, 2.00 Bathroom,
Single Family on 0.00 Acres

Prince Charles, Edmonton, AB

50' by 140' lot development opportunity!
Located in the charming community of Prince Charles and surrounded by many redeveloped lots. Prince Charles is a central, mature neighbourhood characterized by a mix of housing styles including historic homes and modern infills. Key neighborhood features include tree-lined streets, close proximity to Downtown Edmonton, Kingsway Mall, and the Royal Alexandra Hospital, as well as Prince Charles Park and Prince Charles Elementary School within the community. The neighbourhood provides quick access to major commuter routes like the Yellowhead Trail and Kingsway Avenue.



Essential Information

MLS® #	E4456128
Price	\$429,000
Bathrooms	2.00
Full Baths	2
Acres	0.00
Type	Single Family
Sub-Type	Vacant Lot/Land
Status	Active

Community Information

Address	12039 123 Street
---------	------------------

Area	Edmonton
Subdivision	Prince Charles
City	Edmonton
County	ALBERTA
Province	AB
Postal Code	T5L 0H2

Exterior

Exterior Features Back Lane, Corner Lot, Paved Lane, Shopping Nearby

Additional Information

Date Listed September 4th, 2025

Zoning Zone 04

DATA IS DEEMED RELIABLE BUT IS NOT GUARANTEED ACCURATE BY THE REALTORS® ASSOCIATION OF EDMONTON. COPYRIGHT 2025 BY THE REALTORS® ASSOCIATION OF EDMONTON. ALL RIGHTS RESERVED. Trademarks are owned or controlled by the Canadian Real Estate Association (CREA) and identify real estate professionals who are members of CREA (REALTOR®, REALTORS®) and/or the quality of services they provide (MLS®, Multiple Listing Service®)

Listing information last updated on September 4th, 2025 at 5:47pm MDT