

# \$413,700 - 1335 Keswick Drive, Edmonton

MLS® #E4457525

**\$413,700**

3 Bedroom, 2.50 Bathroom, 1,280 sqft  
Single Family on 0.00 Acres

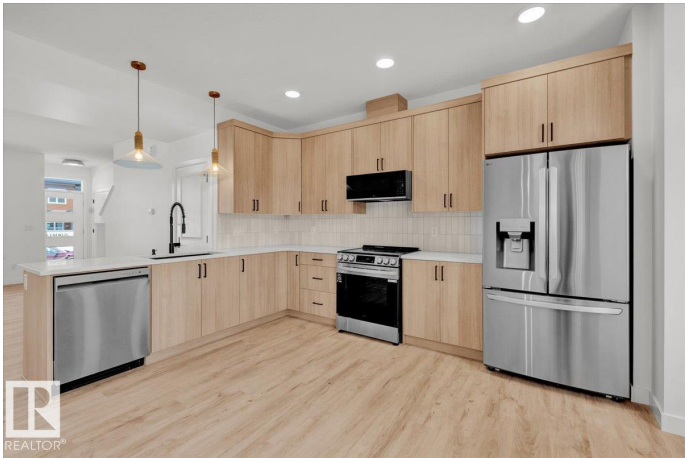
Keswick, Edmonton, AB

QUICK POSSESSION, TURN KEY & NO CONDO FEES! This thoughtfully designed middle-unit townhome in Keswick offers a detached garage and an inviting layout with 9' ceilings on the main floor. The kitchen pairs warm wood-toned cabinets with quartz countertops and finishes that never go out of style. Upstairs, you'll find convenient laundry, a 4pc main bath, and 3 comfortable bedrooms, including a primary suite with walk-in closet and private 4pc ensuite. Surrounded by trails, parks, and ponds, this new build combines modern comfort with timeless appeal. Under construction possession 35-45 days after removal of conditions. Front & back landscaping included. Photos from a previous build & may differ; interior colors are represented, upgrades may vary. HOA TBD.

Built in 2025

## Essential Information

MLS® #	E4457525
Price	\$413,700
Bedrooms	3
Bathrooms	2.50
Full Baths	2
Half Baths	1
Square Footage	1,280



Acres	0.00
Year Built	2025
Type	Single Family
Sub-Type	Residential Attached
Style	2 Storey
Status	Active

### Community Information

Address	1335 Keswick Drive
Area	Edmonton
Subdivision	Keswick
City	Edmonton
County	ALBERTA
Province	AB
Postal Code	T6W 4V8

### Amenities

Amenities	Ceiling 9 ft., See Remarks
Parking	Single Garage Detached
Is Waterfront	Yes

### Interior

Interior Features	ensuite bathroom
Appliances	Dishwasher-Built-In, Dryer, Garage Control, Garage Opener, Microwave Hood Fan, Refrigerator, Stove-Electric, Washer
Heating	Forced Air-1, Natural Gas
Stories	2
Has Basement	Yes
Basement	Full, Unfinished

### Exterior

Exterior	Wood, Stone, Vinyl, Hardie Board Siding
Exterior Features	Airport Nearby, Playground Nearby, Public Transportation, Schools, Shopping Nearby, Stream/Pond
Roof	Asphalt Shingles
Construction	Wood, Stone, Vinyl, Hardie Board Siding
Foundation	Concrete Perimeter

### Additional Information

Date Listed	September 12th, 2025
Days on Market	20
Zoning	Zone 56
HOA Fees	1
HOA Fees Freq.	Annually

DATA IS DEEMED RELIABLE BUT IS NOT GUARANTEED ACCURATE BY THE REALTORS® ASSOCIATION OF EDMONTON. COPYRIGHT 2025 BY THE REALTORS® ASSOCIATION OF EDMONTON. ALL RIGHTS RESERVED. Trademarks are owned or controlled by the Canadian Real Estate Association (CREA) and identify real estate professionals who are members of CREA (REALTOR®, REALTORS®) and/or the quality of services they provide (MLS®, Multiple Listing Service®)

Listing information last updated on October 2nd, 2025 at 7:47pm MDT