

# **\$174,800 - 416 11511 27 Avenue, Edmonton**

MLS® #E4460248

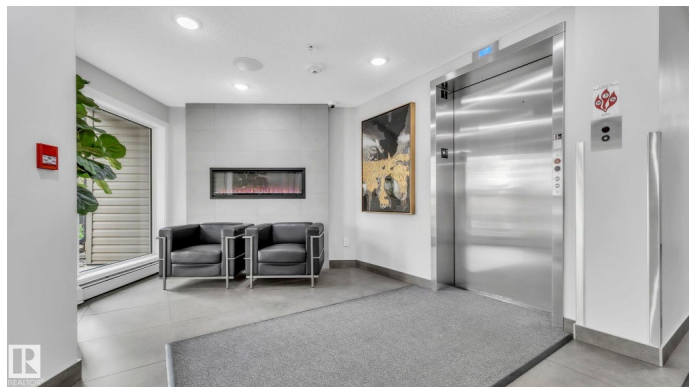
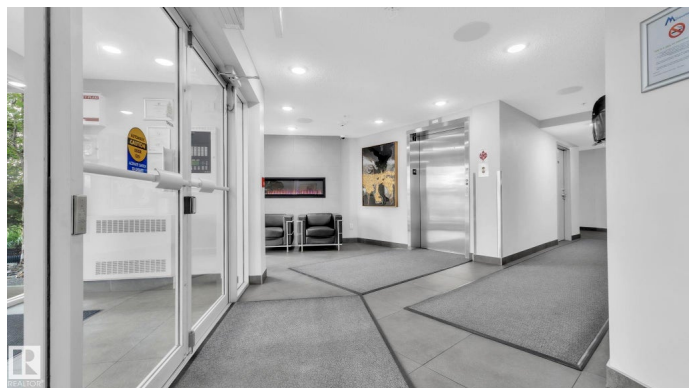
**\$174,800**

2 Bedroom, 1.00 Bathroom, 750 sqft

Condo / Townhouse on 0.00 Acres

Blue Quill, Edmonton, AB

This impressive 2-bdrm condo in Edmontonâ€™s sought-after Blue Quill community sets the bar for modern & convenient living. What's even better? It is cheaper than renting! Perfectly situated near transit, shopping, schools, parks, & walking paths, you will LOVE the lifestyle that this location provides. Inside, youâ€™ll notice the thoughtful upgrades - from the open concept layout, private balcony, thoughtful design, quartz countertops, heated underground parking and in-suite laundry with extra storage. The secure, well-managed building offers peace of mind with 24/7 monitoring, 24 cameras & a caring on-site manager. With low condo fees that include heat, water & waste removal, plenty of visitor parking & even pet-friendly policies (with board approval), itâ€™s a property that truly covers every detail. Whether youâ€™re relaxing at home or exploring the vibrant neighborhood, this Blue Quill condo is where comfort, convenience & style meet. Don't miss out on this incredible opportunity to love where you live!



Built in 2019

## **Essential Information**

MLS® # E4460248

Price \$174,800

Bedrooms	2
Bathrooms	1.00
Full Baths	1
Square Footage	750
Acres	0.00
Year Built	2019
Type	Condo / Townhouse
Sub-Type	Lowrise Apartment
Style	Single Level Apartment
Status	Active

### Community Information

Address	416 11511 27 Avenue
Area	Edmonton
Subdivision	Blue Quill
City	Edmonton
County	ALBERTA
Province	AB
Postal Code	T6J 7J8

### Amenities

Amenities	No Smoking Home, Parking-Extra, Parking-Visitor, Secured Parking, Security Door, Storage-In-Suite
Parking	Underground

### Interior

Appliances	Dishwasher-Built-In, Dryer, Microwave Hood Fan, Refrigerator, Stove-Electric, Washer, Window Coverings
Heating	Baseboard, Natural Gas
# of Stories	4
Stories	1
Has Basement	Yes
Basement	None, No Basement

### Exterior

Exterior	Wood, Stone, Vinyl
Exterior Features	Playground Nearby, Public Transportation, Schools, Shopping Nearby, See Remarks
Roof	Asphalt Shingles

Construction	Wood, Stone, Vinyl
Foundation	Concrete Perimeter

**Additional Information**

Date Listed	September 30th, 2025
Days on Market	2
Zoning	Zone 16
Condo Fee	\$428

DATA IS DEEMED RELIABLE BUT IS NOT GUARANTEED ACCURATE BY THE REALTORS® ASSOCIATION OF EDMONTON. COPYRIGHT 2025 BY THE REALTORS® ASSOCIATION OF EDMONTON. ALL RIGHTS RESERVED.Trademarks are owned or controlled by the Canadian Real Estate Association (CREA) and identify real estate professionals who are members of CREA (REALTOR®, REALTORS®) and/or the quality of services they provide (MLS®, Multiple Listing Service®)

Listing information last updated on October 2nd, 2025 at 3:17am MDT