

\$534,980 - 2402 Kelly Circle, Edmonton

MLS® #E4460271

\$534,980

4 Bedroom, 3.50 Bathroom, 1,780 sqft

Single Family on 0.00 Acres

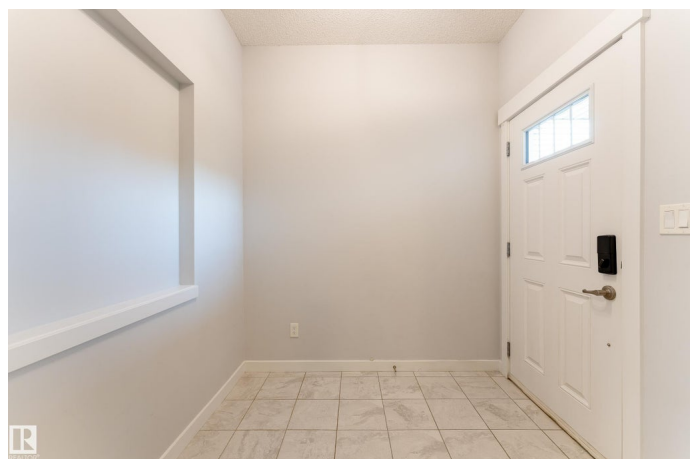
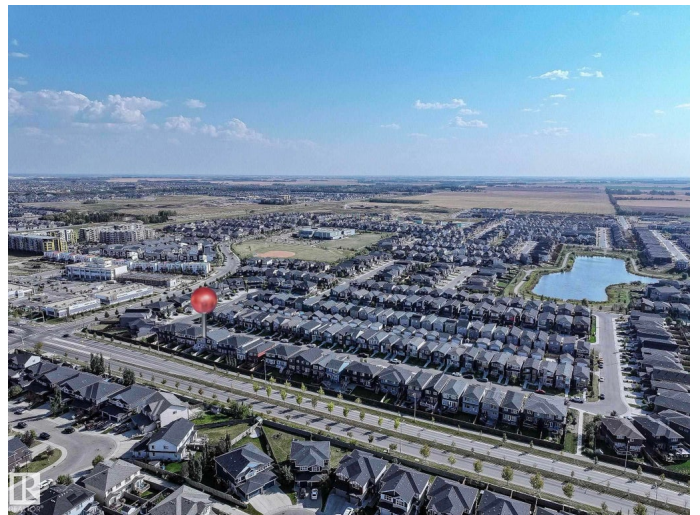
Keswick, Edmonton, AB

Finished Basement and Separate Entry in One at Keswick! This beautiful 1780 sqft half-duplex was built by Dolce Vita. The 9ft main floor OPEN CONCEPT kitchen/family/dining room features large windows allowing for plenty of natural light. Kitchen has plenty of cabinetry, loads of counter space, bar top seating & UPGRADED SS appliances! Upstairs you'll find 3 bedroom, including the master bedroom featuring its en-suite and large WALK-IN-CLOSET. The upper level has a great flex space that is perfect for an office/bonus room. Upstairs laundry is another bonus feature. Basement is fully finished with bedroom, kitchen, laundry and SEPARATE ENTRY. AC is another bonus. Also, enjoy the beautiful summer days with a huge backyard space. Excellent access to Henday, Windermere Shopping Center, parks and more!

Built in 2018

Essential Information

MLS® #	E4460271
Price	\$534,980
Bedrooms	4
Bathrooms	3.50
Full Baths	3
Half Baths	1



Square Footage	1,780
Acres	0.00
Year Built	2018
Type	Single Family
Sub-Type	Half Duplex
Style	2 Storey
Status	Active

Community Information

Address	2402 Kelly Circle
Area	Edmonton
Subdivision	Keswick
City	Edmonton
County	ALBERTA
Province	AB
Postal Code	T6W 4G3

Amenities

Amenities	Air Conditioner, Ceiling 9 ft., Deck, No Smoking Home
Parking	Double Garage Attached

Interior

Interior Features	ensuite bathroom
Appliances	Air Conditioning-Central, Dishwasher-Built-In, Dryer, Garage Control, Garage Opener, Hood Fan, Refrigerator, Stove-Electric, Washer
Heating	Forced Air-1, Natural Gas
Stories	3
Has Basement	Yes
Basement	Full, Finished

Exterior

Exterior	Wood, Asphalt, Stone, Vinyl
Exterior Features	Fenced, Playground Nearby, Schools, Shopping Nearby
Roof	Asphalt Shingles
Construction	Wood, Asphalt, Stone, Vinyl
Foundation	Concrete Perimeter

School Information

Elementary	Joey Moss
------------	-----------

Middle	Joey Moss
High	Harry Ainlay

Additional Information

Date Listed	October 1st, 2025
Days on Market	1
Zoning	Zone 56

DATA IS DEEMED RELIABLE BUT IS NOT GUARANTEED ACCURATE BY THE REALTORS® ASSOCIATION OF EDMONTON. COPYRIGHT 2025 BY THE REALTORS® ASSOCIATION OF EDMONTON. ALL RIGHTS RESERVED. Trademarks are owned or controlled by the Canadian Real Estate Association (CREA) and identify real estate professionals who are members of CREA (REALTOR®, REALTORS®) and/or the quality of services they provide (MLS®, Multiple Listing Service®)

Listing information last updated on October 2nd, 2025 at 3:02am MDT