

\$414,555 - 9807 165 Avenue, Edmonton

MLS® #E4464379

\$414,555

4 Bedroom, 1.50 Bathroom, 989 sqft
Single Family on 0.00 Acres

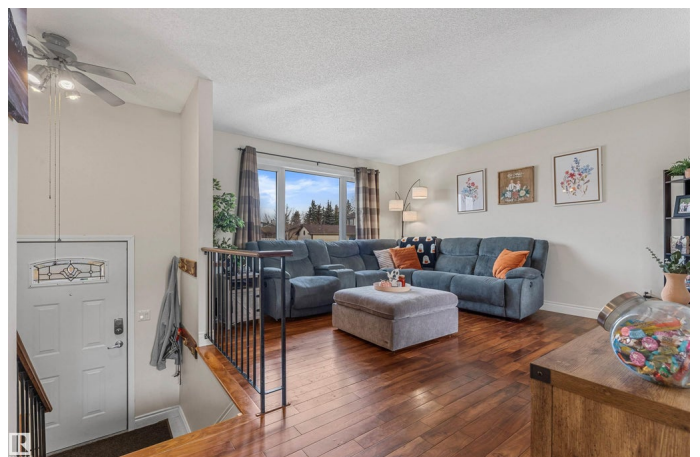
Lorelei, Edmonton, AB

Outstanding location, Oversized Garage, Huge Yard, & Move-in-ready! Step inside to find gleaming hardwood floors throughout the living room, hallway, & all 3 upper bedrooms – no carpet on the main floor! The kitchen features new vinyl flooring, plenty of cabinets, & overlooks the massive new 2-tier deck in the yard. Main floor offers 3 bedrooms & a renovated 4-pc bath. A few steps down, enjoy a spacious rec room perfect for movie nights or family fun, plus your 4th bedroom & half bath (room to make it a full bath). Outside, relax in your sunny south-facing pie-shaped yard, and a 2-tiered deck ideal for entertaining. New shingles, newer HWT & Furnace, and a 24x24 oversized detached garage with a long front driveway access complete this fantastic property. Just minutes from Namao Shopping Centre and Anthony Henday! Move-in ready, perfectly located, and ready to be yours!

Built in 1983

Essential Information

MLS® #	E4464379
Price	\$414,555
Bedrooms	4
Bathrooms	1.50
Full Baths	1
Half Baths	1



Square Footage	989
Acres	0.00
Year Built	1983
Type	Single Family
Sub-Type	Detached Single Family
Style	Bi-Level
Status	Active

Community Information

Address	9807 165 Avenue
Area	Edmonton
Subdivision	Lorelei
City	Edmonton
County	ALBERTA
Province	AB
Postal Code	T5X 4Z1

Amenities

Amenities	On Street Parking, Deck, Parking-Extra, R.V. Storage
Parking	Double Garage Attached, Front/Rear Drive Access, Over Sized

Interior

Appliances	Dishwasher-Built-In, Dryer, Hood Fan, Refrigerator, Stove-Electric, Washer
Heating	Forced Air-1, Natural Gas
Stories	2
Has Basement	Yes
Basement	Full, Finished

Exterior

Exterior	Wood, Brick, Vinyl
Exterior Features	Fenced, Fruit Trees/Shrubs, Landscaped, Playground Nearby, Public Transportation, Schools, Shopping Nearby
Roof	Asphalt Shingles
Construction	Wood, Brick, Vinyl
Foundation	Concrete Perimeter

School Information

Elementary	Lorelei School
------------	----------------

Middle	Mary Butterworth School
High	Queen Elizabeth School

Additional Information

Date Listed	November 1st, 2025
Days on Market	2
Zoning	Zone 27

DATA IS DEEMED RELIABLE BUT IS NOT GUARANTEED ACCURATE BY THE REALTORS® ASSOCIATION OF EDMONTON. COPYRIGHT 2025 BY THE REALTORS® ASSOCIATION OF EDMONTON. ALL RIGHTS RESERVED. Trademarks are owned or controlled by the Canadian Real Estate Association (CREA) and identify real estate professionals who are members of CREA (REALTOR®, REALTORS®) and/or the quality of services they provide (MLS®, Multiple Listing Service®)

Listing information last updated on November 3rd, 2025 at 11:47am MST